

# The Elgin Review

Wednesday  
February 19, 2025

Volume 142, Number 22

1 Section, 16 Pages

USPS Number 172-8220

\$1.00

## In Brief

### Elgin summer ball team sign up is set for today

From 4 p.m. to 7:30 p.m. at fire hall.

There may be snow on the ground but it's time to start thinking about summer baseball and softball season.

Sign up for the 2025 Elgin summer ball teams will be held Wednesday, February 19 (today).

According to Kim Fangman, sign up will take place at the Elgin Fire Hall from 4 p.m. to 7:30 p.m.

Anyone with questions should contact Fangman at (402) 843-0152.

### Wild game feed planned for St. Patrick's Day

At the Elgin KC Hall.

What would St. Patrick's Day be in Elgin without ... a wild game feed?

After a one year hiatus, the wild game feed will be held again here in Elgin.

Organizer Gary Hoefer said planning for the event is underway at the present time and a few more details need to be worked out.

This much is certain - the wild game feed will be held Monday night, March 17.

The location will be the Elgin KC Hall.



### Residents brave Sunday's cold for Henn benefit

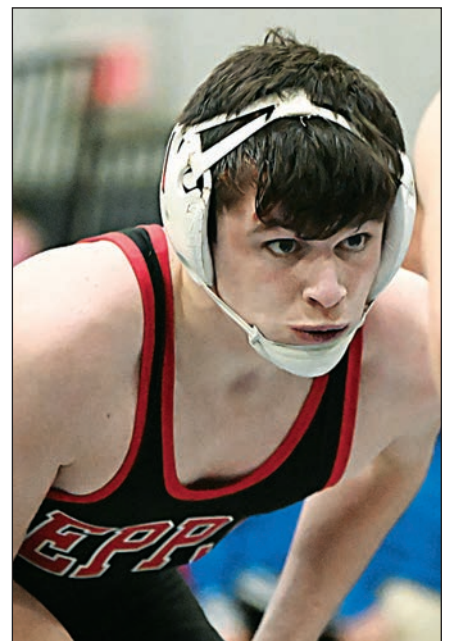
Sunday morning's cold weather was an additional incentive for people to come out and eat some "hot" cakes at the Elgin KC Hall. The Elgin Volunteer Fire Department and Elgin EMTs hosted a medical benefit for the Justin and Savannah Henn family that morning.

A large crowd arrived with a long line and some waiting time once church services/Mass was over.

A grill was set up in the back room of TC Vet Clinic (next door) and "runners" kept the KC kitchen stocked with fresh and hot pancakes and french toasts.

Proceeds from the Free Will Donation benefit will be given to the family to help offset medical expenses for twin toddlers Lainey and Nora.

E-R photos by Dennis and Lynell Morgan



EPPJ junior Landyn Veik

### Landyn Veik earns first trip to Omaha for state wrestling

Veik to test his skills against state's top wrestlers this week

GREELEY — The goal of every high school wrestler is to compete at the NSAA State Wrestling Tournament in Omaha.

For Wolfpack junior Landyn Veik, he achieved that goal Saturday afternoon here, finishing third in the 165-pound weight class to earn a trip to state!

Having come up one win short of a trip to state last season, Veik made sure that didn't happen again when he won a "heartbreak" round match against Arcadia/Loup City's Joseph Ducker by the slimmest of margins - 1 to 0.

With his trip to state secured, Veik came back to win the third place medal in the 165-pound division, pinning Valen Searight of Lutheran High Northeast in the consolation finals Saturday afternoon.

The lone Wolfpack boys wrestler to qualify for state this year, Veik will have his first round match Thursday.

There, he will face Randolph's Gage Jensen. A senior, Jensen's record is 45-6. Veik's record coming into Omaha is 27-10.

Good luck, Landyn!

## Public Notices

Public notices in this week's newspaper include:

Notice of Delinquent Taxes — Antelope County

Notice to Bidders — Antelope County Proceedings — Antelope County Board of Commissioners

Proceedings — Antelope County Board of Equalization

Notice of Meeting — Antelope County Board of Equalization

Proceedings — Village of Bartlett

Proceedings — District #18 Board of Education

Proceedings — Elgin City Council (2)

Notice to Bidders — City of Elgin

Notice of Organization — KLK Real Estate L.L.C.

Notice of Dissolution — JG FUNK FARMS, LLC

Notice of Dissolution — GEF Partnership, L.L.C.

The Elgin Review is the official legal newspaper for Antelope County, Antelope County Historical Society, Village of Bartlett, Upper Elkhorn Natural Resources District, the State of Nebraska, the City of Elgin and Elgin School District #18.

## New teacher hired to replace Heithoff at EPS

A familiar face to students, having served as a substitute teacher this semester, Brian McGill has been hired as a full-time teacher at Elgin Public Schools for the 2025/2026 school year.

The District #18 Board of Education approved the hiring when they met in regular session last week.

McGill, who currently lives in Petersburg, will teach math, filling the position previously held by Dorothy Heithoff who accepted an early retirement offer and will be retiring in May.

According to Superintendent Mike Brockhaus, McGill grew up in California and has family ties to the Lindsay area. A graduate of California State Polytechnic University with a Degree in Business Administration, McGill has owned his own company in Industrial Painting in Colorado, created websites for a couple of different busi-

nesses and has been an over the road truck driver.

"Mr. McGill is a very intelligent person with vast life experiences that have revolved around businesses and math concepts," Brockhaus said. "He really enjoys math and math concepts and we are really looking forward to Brian joining us full time this fall."

In other action:

First reading — Approved during the meeting, on first reading, was an update to the school's existing policy on testing and honor awards. As part of the discussion, Principal Greg Wehloff indicated the district is looking at changing the three-tier honor roll system to two tiers (All A's and All A's and B's).

Also discussed, but no action taken, was possibly changing from May to an earlier month in the school year, the announcement of additions to the

National Honor Society.

Transfer — On a 4-0 vote (Todd Heithoff abstaining), the board approved a transfer of \$350,000 from the General Operating Fund to an interest-bearing account at Great Plains State Bank.

Contracts — Current teachers at EPS have now been offered contracts for the 2025/2026 school year. Brockhaus said signed contracts must be returned no later than March 17.

More bids — Also approved during the meeting which lasted just over one hour were carpeting for the new Spanish classroom (old teachers' lounge room) to be done by Leifeld's at a cost of \$2,686.44. Another bid approved was a 15'x9' heavy duty rug with the EPS log from Urbanec's at a cost of \$1,519. The rug will go into the production room at the high school.

## DeKay says brand laws need to be revisited

This past week, the Agriculture Committee heard two bills at a public hearing, LB646 and LB665.

LB646 by Senator Ibach would exempt feedlots within the brand inspection area from mandatory brand inspection unless those feedlots request to the Nebraska Brand Committee to remain a registered feedlot. LB646 is the latest bill introduced attempting to address concerns among some members of the state's cattle industry, particularly cattle feeders, who have questioned the utility and value of mandatory inspection.

These concerns have led to some instability in the brand law as mandatory brand inspection has, in the recent past, been the subject of a lawsuit and legislation introduced in 2020 to end mandatory brand inspection.

The intent of LB646 is to try to bring uniformity in treatment across the state for feedlots. LB646 would still keep brand inspection in place for cow/calf producers in the brand inspection area. This legislation would also not impact anyone's ability to use brands or own brands.

LB646's public hearing was well attended and resulted in lengthy discussion by both the supporters and the opponents.

At this time, however, LB646 will require more work before it has a chance to be advanced out of committee. For example, the Nebraska Brand

Committee is a cash funded agency that operates on a \$5.8 million budget, and exempting the feedlots in the brand inspection area would result in a loss of revenue of about \$1.6 million for the agency.

I want to emphasize that although all eight members of the Agriculture Committee did cosponsor LB646, we each reserve the right to also not support this legislation. We all agree that we need to revisit the brand laws given the current instability and conflicts between feedlots and cow/calf producers in the brand inspection area.

Ensuring the Brand Committee has sufficient revenue is one of my greatest concerns both for Nebraska and personally since I rely on brand inspection for my own cow/calf operations in western Knox County.

If Senator Ibach is not able to make changes to LB646 to my satisfaction, then I reserve the right to both withdraw my name as a cosponsor and to not support this legislation.

LB665 by Senator Storer would allow producers to voluntarily use livestock electronic IDs, provided that those IDs are not manufactured by an entity with direct or indirect ties to any federally-designated foreign adversary, which will help to preserve the integrity of Nebraska's livestock management.

The intent of this legislation is to try to find a balance between accurate disease traceability and livestock management with the protection of the state's food supply from potential foreign tracking and surveillance, which could pose risks to national security. From the hearing, I anticipate an amend-

ment will be needed to address a number of technical concerns that were brought up during testimony.

Meanwhile, the Education Committee heard LB303, a bill introduced by Senator Hughes at the request of the Governor. LB303 would make a number of changes to school funding, including increasing Foundation Aid to schools from \$1,500 per formula student to \$1,590 per formula student, dropping the maximum levy for schools from \$1.05 to \$1.02 per \$100 of taxable valuation, and creating a base levy adjustment set at \$0.30 per \$100 of taxable valuation.

Additionally, the bill would create the School Finance Reform Commission. The Commission will be tasked with providing the Legislature with annual recommendations to adjust school funding to ensure stable state aid to schools. LB303 received broad support from a number of groups including the Nebraska Rural Community Schools Association, Nebraska Farm Bureau, and Nebraska Farmers Union.

This bill offers an incremental pathway to ensure our schools receive more money from the state, thereby reducing their need for property taxes. However, LB303 is currently projected to cost roughly \$60 million a year and will need alternate funding in order to pass since the state is currently faced with a \$432 million budget shortfall.

As bills are heard and debated, I would appreciate your input. Call my Capitol office telephone number at (402) 471-2801 or send email to bdekay@leg.ne.gov. My mailing address is: Senator Barry DeKay, District #40, P.O. Box 94604, State Capitol, Lincoln, NE 68509.

## Weather

The high temperature last week was 36 degrees recorded on February 9.

The low temperature during the same period was -17 degrees recorded on February 12-13.

Altogether, .25 of an inch of precipitation was recorded last week.

Following are the high and low temperatures, and precipitation amounts, as recorded by Elgin weather observer Leonard Orlowski.

Date	High	Low	Prec
Feb. 9	36	06	.00
Feb. 10	20	-3	.03
Feb. 11	07	-3	.20
Feb. 12	11	-17	.00
Feb. 13	19	-17	.00
Feb. 14	30	09	.02
Feb. 15	10	-5	.00
Total for last week			0.25
Total for February			0.27
Total precipitation 2025			0.37

**DEAN'S** - where your gets you the best value.

Florida Sweet Corn 4 ears \$2.49

Russet 5 lb bags Potatoes 2/\$4.00

Yellow 3 lb bags Onions \$1.99

Sea Best® Cocktail Shrimp Tray \$8.99 each 15.5 oz

USDA Choice Boneless Beef Roast \$4.99 lb

USDA Choice Beef Front Quarter Bundle Special

13# - Boneless Rib Eye Steaks

25# - Boneless Chuck Roasts

7# - Minute Steaks

40# - 85% Lean Ground Beef

Price \$699.00

1/2 Bundles Price \$350.00

Approx. Wt. 42#

**DEAN'S MARKET**

Downtown Elgin

402-843-5300

Ad prices good through 2/25/2025





From JoAnn Baum's Kitchen

# Baked Pork Chops

Leftovers? Fantastic!

Good day, "What's for supper?" This is the million dollar question!! Well... This week's recipe truly doesn't get any easier than this. If you have any leftovers they are amazingly delicious.

Do a baked potato in the oven at the same time and you have that meat and potato supper so many guys like. Here's an idea for your supper tonight! Enjoy.

JoAnn

## BAKED PORK CHOPS

4-6 1 inch pork chops  
4 Tbls butter  
4 Tbls packed brown sugar  
1 Tbls soy sauce

1 Tbls Worcestershire sauce

Preheat oven to 350°. In a large baking dish spray with Pam™ cooking spray lay your park chops. Add one Tbls of packed brown sugar on the top of each pork chop. Add a Tbls of butter to each pork chop. Drizzle the soy sauce and Worcestershire sauce over the chops. Cover with foil and bake for 40 minutes. After 40 minutes remove the foil and bake for another 20 minutes. They will be golden brown. So delicious.

## Dr. Zackary Gangwer PODIATRY SPECIALIST

Dr. Zackary Gangwer, podiatrist, provides an out-patient podiatry clinic at Antelope Memorial Hospital on the **1st and 3rd Mondays** of each month.



Dr. Gangwer offers comprehensive care for the foot and ankle. He specializes in the care of traumatic injuries, sports injuries, diabetic limb salvage, pediatrics (including club foot) and reconstructive surgery of lower extremities. He offers surgical services for foot and ankle joint replacements and reconstruction at Antelope Memorial Hospital.

Dr. Gangwer's next podiatry clinics at AMH are scheduled on **Mondays, March 3rd and 17th**. For an appointment, call **402.887.6210**.



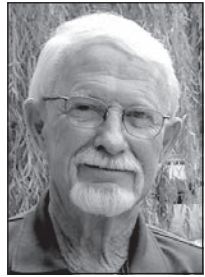
**Antelope Memorial Hospital**  
Healing Body, Mind and Spirit  
402.887.4151 • amhne.org

# OBITUARIES

## Bill Eby, 83

December 14, 1941 - February 15, 2025

A member of the Elgin Christian Community Church, he spent many years as a mechanic and car salesman.



Bill Eby, age 83, of Neligh, Nebraska passed away Saturday, February 15, 2025, at Faith Regional Health Services in Norfolk, Nebraska. Memorial services will be held at a later date. Brockhaus-Harlan Funeral Home in Tilden, Nebraska is in charge of arrangements.

Seeger at the Methodist Church in O'Neill. They were blessed with two children, Lori and Pamela.

Bill lived in O'Neill and Neligh and also in Memphis, Tennessee throughout his lifetime. He was a mechanic and also worked in car sales.

Bill was a member of Elgin Christian Community Church. He served on the Neligh City Council and also on the Neligh Volunteer Fire Department.

He is survived by his wife, Linda Eby; daughters, Lori (Todd) Pollock and Pamela Eby; three grandchildren; and one great-grandchild.

Bill was preceded in death by his parents.

The Elgin Review • February 19, 2025

## City approves land purchase

Following a public hearing on Friday night, February 7, the Elgin City Council formally approved an addition of land to the city's tree dump.

Located west of Elgin, the tree dump has been used for many years. Several months

ago, Bob Moser approached City Hall about wanting to sell land adjacent to the dump site.

In January 2025, the council approved the purchase of up to 15 acres.

On Friday night, the council made the purchase official. The cost of the additional land will be \$2,500 per acre.

The action followed a public hearing on the land sale.

Earlier in the month, on February 3, the city council met in regular session.

Items acted on were:  
• Adopting Resolution 2025-1 directing the sale of a 2008 8ft Henderson 7xMILD salt spreader with a Briggs & Stratton 8HP engine

• Seeking separate bids for one tanker (7,000 gallons) and another for 14,000 gallons of armor coating.

## Icy conditions blamed for death of deputy sheriff

A one-vehicle accident Wednesday night, February 12, claimed the life of a Holt County deputy sheriff.

Deputy Steven Binkert, age 41, of O'Neill died from injuries he sustained when, driving westbound on Highway 75 less than a mile from Neligh when the vehicle drifted onto the shoulder. According to reports, he overcorrected on the icy surface and lost control of the vehicle which went into the ditch and hit a power pole sometime after 10 p.m. Responding to the accident was the Antelope County Sheriff's Department and other rescue personnel.

GORDON "FELLER" AND DARLENE "DOLLY" BAKER ESTATE

## PASTURE AND DRYLAND FARM FOR SALE

**TRACT 1**  
**167 +/- acres of pasture** located just 1 mile southeast of Neligh with stunning views of the Elkhorn River Valley. This pasture has historically carried 30-35 cow-calf pairs for the summer grazing season.

**TRACT 2**  
**132 +/- acres of dry cropland** located just 1 mile southeast of Neligh. The property has good access from a driveway off of Highway #275 to the south.

Legal descriptions are available upon request. Final acres will be subject to a survey to be completed prior to closing.

**SEALED BIDS DUE FEB. 27, 2025.**  
Live auction among the top 3 sealed bids to follow.

View additional information at: [arrowheadnebraska.com/properties/baker/](http://arrowheadnebraska.com/properties/baker/)



Bids to be submitted to:  
**ARROWHEAD LAND AUCTIONS**  
420 M St, Neligh | 402-887-4811  
garrett@arrowheadnebraska.com

or **KLEIN LAW OFFICE, PC**  
101 W 4th St, Neligh | 402-887-4190  
marty@kleinlawpc.com



## BCHC to offer CNA course in Albion

Boone County Health Center (BCHC) is excited to announce the launch of a Hybrid Certified Nursing Assistant (CNA) Course in collaboration with Central Community College (CCC). This course, previously offered last fall exclusively to Boone Central High School students, is now open to the public. Typically, individuals seeking this certification must travel to a larger town, but BCHC is making it more accessible by offering the program locally.

This hybrid course provides students with a flexible learning structure, combining 30 hours of online coursework with 46 hours of in-person lab training at BCHC. The lab portion will be led by Jennifer Molt and Angie Schalk, RN, Hospital

Nursing Supervisor at BCHC. According to Jennifer Molt, "This is a fantastic opportunity for individuals looking to start a career in healthcare. The hybrid format allows students to complete coursework online while still gaining hands-on experience through in-person labs."

Applications for the course are due by February 27. Selected participants will be notified by March 14, and registration through CCC will open in April. Orientation and the online Canvas course will begin on May 14, with the first lab session starting on May 22. Lab sessions will be held on May 22, 23, 27, 28, 29, 30, and June 2, 3, 4, 5, and 6, from 7:30 AM to 3:00 PM. The final exam will take place

on June 6. The total cost of the course is approximately \$460, which includes tuition, books, and fees payable to Central Community College.

The course will only be held if at least six students enroll. Applicants must apply online by February 27, and payment will be due to CCC following selection.

The in-person lab training will be conducted at Boone County Health Center using mannequins and supplies provided in part by a grant from the Albion Education Foundation.

For more information or to apply, please contact Jennifer Molt at [jmolt@boonecentral.esu7.org](mailto:jmolt@boonecentral.esu7.org).

## Gateway Theatre

136 South 4th Street  
402-395-3394, Albion, NE

http://ms2.esu7.org/bcbusiness/about/

Stop in & pick up a **POP & POPCORN TO GO** even if you're not viewing the movie.

**Show Time...7:30 pm**  
Ticket sales begin at 7:00 pm  
Concessions begin at 7:00 pm

Fri., Sat. & Sun.

# Feb. 21, 22 & 23

## DOG MAN

Next Weekend: Dog Man Rated PG

**Shop At Home And Support Elgin's Businesses!**

# FULL SERVICE PRINTING

ENVELOPES • LETTERHEAD • BOOKLETS • CUSTOM BUSINESS FORMS  
BUSINESS CARDS • LABELS • STATIONARY • INVITATIONS • WEDDING  
AND SPECIAL EVENT PROGRAMS • DIRECT MAILINGS • MUCH MORE.

**T&A** TIMELY AND ACCURATE.

**P&A** PROFESSIONAL AND AFFORDABLE.

**F&A** FONTS AND ARTWORK TO FIT YOUR CUSTOM DESIGN.

Nearly **40 years** of design experience.

## THE ELGIN REVIEW

**CUSTOMERS:**  
Due to supply shortages, completion times can vary and some stock is no longer available. Please consult with us well in advance of your needed date.

With rare exceptions, all work is done in-house, allowing us to oversee your order for quality control every step of the way.

# LOCAL MATTERS.

We are your **LOCAL BANK** with **LOCAL PEOPLE** making **LOCAL DECISIONS.**

Your banking needs are unique to you and we understand that. That's why we won't do "one size fits all" banking.

If you need a personal or operating loan, insurance and want to discuss your upcoming financial year, call us today.

**bank of ELGIN**

**Draper Insurance Agency**

[www.bankofelgin.com](http://www.bankofelgin.com)

**402-843-2228**

**Elgin, NE**

Have a cup of **JOE** on us!

Next Friday, **FEBRUARY 28**

~ throughout the day ~

at **HOMETOWN STATION**

As the Elgin FFA Chapter celebrates **NATIONAL FFA WEEK**



# Early Christians did not celebrate birthdays

Well, it happened again last month, January 15th, my birthday. Seventy-three and counting with hopes of many more.

Now, it's February already and the days keep rolling along. Even though time is time, never changes, when we get older, days seem to fly by faster.

According to a University of Michigan psychology professor, how we experience time is based on a combination of perspective, memory, and experience.

Take me as a five-year-old spending a week away from home with cousins for the first time. Everything was new and exciting.

Those seven days were a big part of my life then. Savoring each moment seemed to take a

long time.

Now, at 73, a week is a much smaller portion of my lifetime. Unless it's filled with fresh experiences, such as travel to new places, volunteerism using newfound skills, and deep discussions with friends, those same seven days melt into the mundane.

Seems that our brain lumps time together when each day looks and feels like the day before. Before you know it, a year has gone by. And when one year looks mostly like the last, pretty soon a decade is gone.

Fun to look up famous people born the same day as you. In my case, the civil rights leader Martin Luther King, Jr. (1929-1968) shares my date of birth. In addition to getting a day off

from work for Martin Luther King Day (third Monday in January), his quotes have always been an inspiration. Here is an example:

"Darkness cannot drive out darkness; only light can do that. Hate cannot drive out hate, only love can do that."

Since this is February, note that the next Leap Day (February 29) comes in 2028. Obviously, this is the rarest date for a birthday.

Your chances of being born on February 29th are one in 1,461. The most common birthdays are in September likely due to the holiday and cold weather effects.

Once had a colleague from a rural community in India who wasn't really sure of the date of his birth. With DOB (date of birth) a common requirement of identify in the United States, he had to get his parents to assign him a date.

Early Christians didn't celebrate birthdays since it was a pagan tradition. Such cultures believed evil spirits lurked on days of major change, such as a person's birthday. Lit candles and loud noisemakers were supposed to chase away the evil

ones.

Friends and family would gather around the person on their birthday and give them gifts in hopes that good cheer would chase away evil.

Birthday parties are a big deal now especially for little ones.

Pinatas, tableware, balloons, trinkets, and other frivolous items line shelf after shelf at party stores. As we age, some people look at birthdays as "just another day" unless it's a BIG ONE.

Common milestone birthdays are sweet 16, transitioning from childhood to adulthood at 18, and the drinking age of 21. Then there are parties on the 10s - 30, 40, 50, 60, and often one around 65 to note retirement. Perhaps 70 denotes a life well lived and 100, a centenary, is filled with memories.

A few weeks ago, we joined a joyful occasion celebrating the birthday of a 103-year-old friend. Young in appearance, mentally acute, a brisk walker, an amazing pie baker, and just an all-around terrific person - an inspiration for us all.

Appreciated all the fine folks who acknowledged my birthday last month. One friend gave me a book on writing. Once that gets read, we'll see if my columns change. In the meantime, remember your birthday is your day. Set it aside to celebrate YOU.

Comments welcome at [jane.schuchardt@gmail.com](mailto:jane.schuchardt@gmail.com).

## Say What?



Elgin Columnist  
Jane Schuchardt

# Looking Back

The Elgin Review

Sixty Years Ago

February 18, 1965

Donald W. Nyrop, president of Northwest Airline, was credited recently in the American Aviation magazine for bringing the carrier from near-bankruptcy to one of the soundest financial positions in the industry. This was accomplished in a period of ten years.

Elgin High School basketball royalty chosen Friday night were George Mooney and Bonnie Iburg, king and queen for 1965. Ring bearers were Christine Draper and Rollie Huffman.

Miss Sharolyn Rittscher, daughter of Mrs. Creta Rittscher and the late Ernest Rittscher was married to Richard Wells of Neligh, son of Mr. and Mrs. Levern Wells of Brunswick, Sunday. The ceremony was performed at 4 o'clock in the Congregational Church in Neligh.

Mr. and Mrs. Gale Schindler are the parents of a 9 lb. 10 oz. son, Kenneth Allen born Feb. 12, 1965 in the Antelope Memorial Hospital.

Donald Mason, son of Mr. and Mrs. Milton Mason, was among ten seniors at Hastings College to compile perfect (4.0) grade averages for the first semester, according to the college registrar. There were 23 Hastings College students, 10 seniors, seven juniors, one sophomore and five freshmen who earned this perfect average.

Fifty Years Ago

February 13, 1975

Crowned King and Queen at the Elgin High School Saturday night in the school's assembly preceding a dance and lunch were John Miller and Priscilla Dozler. The honored couple's attendants are Julie Sutton, Kathy Braband, Chris Wildman, Kathy Anderson, Rollie Huffman, Brad Norton, and Ken Reestman.

Elgin High School senior Bradley G. Norton has been selected by Senator Roman L. Hruska as an alternate nominee to the Air Force Academy in Colorado Springs, Colo. Norton is the son of Mr. and Mrs. Gene R. Norton.

Elgin firemen were called out Wednesday night, Feb. 5 at 7:52 to extinguish a fire near the Gail Doran property in the northeast part of town. Bob Borer's auto had become stuck in the drifting snow and he had gone downtown to seek assistance. Upon returning to his car it was found burning.

Mr. and Mrs. Cyril Schrage of Clearwater are parents of a daughter, Coleen Jo, born Feb. 4, 1975. She weighed 6 pounds 13 1/2 ounces and was born at Antelope Memorial Hospital.

Mr. and Mrs. Earl Braband were honored by their children with an open house at the Elgin United Methodist Church on Jan. 12 from 2 to 4:30 p.m. Mr. and Mrs. Roger Braband, son and daughter-in-law of the couple, hosted the reception with Mrs. John Demerath at the guest book.

Thirty Years Ago

February 15, 1995

Ted Baum of Elgin won the Greater Midwest Auctioneer's Championship Contest last Saturday Feb. 11, in Pierz, MN. The contest was hosted by Rich Prairie Livestock Exchange, Inc. and the Minnesota State Auctioneer's Association.

Two Elgin-Petersburg mat men survived the bruising D-2 District Tournament at Winside last Saturday, Feb. 11, and advanced to this week's State Wrestling Tournament. Earning second place district medals and qualifying for state are Mark Dietz, a senior at 126 pounds, and Brock Henn, a senior at 142 pounds.

Five wrestlers will represent Pope John Central Catholic this week at the Nebraska High School Wrestling Tournament in Lincoln. These qualifiers are James Thiele, Scott Borer, John Stuhr, Heath Petsche, and Bryan Stuhr.

See BACK, Page 6 ▶



Photo submitted

Pope John's OIC team of Matthew Kerkman, Camry Kittelson, Brooke Kinney, Tessa Barlow and Aiden Klein.

## PJCC speech team takes first in 3 events at Burwell Invite

The Pope John speech team had a successful showing last Saturday at the Burwell Invitational.

The team place fourth out of the 15 teams that competed.

Receiving a superior ratings were Olivia Klein informative speaking, Christian Preister,

humorous prose, and Kinley Druke, entertainment speaking. Receiving an excellent rating in poetry was Harlie Tyler.

Tournament medalists included Aiden Klein, Camry Kittelson, Tessa Barlow, Brooke Kinney, and Matthew Kerkman got first place in oral interpretation of drama. Reese Stuhr was the varsity serious prose champion, with Tessa Barlow coming in fourth place. Matthew Kerkman and Christian Preister got first in novice duet acting. Jovie Borer earned third place in program of oral interpretation.

The duet acting pair of Aiden Klein and Brooke Kinney came in fourth place as well.

The team is coached by Amy Klein and Chris Grundmayer.

## Public invited to view 'The Chosen' at ECCC

The Elgin Christian Community Church (ECCC) welcomes the public to join parishioners in viewing the television series "The Chosen."

The acclaimed program is being shown in the fellowship hall at the church on Wednesday evenings, beginning at 6:30 p.m.

## HELP WANTED:

- Flexible Hours
- Insurance Stipend
- Performance-Based Pay
- Vacation
- Monday-Friday Hours
- Class B CDL Preferred

Contact Heath at  
**402-750-4433**  
[heathclausen@yahoo.com](mailto:heathclausen@yahoo.com)

**JERRY'S**  
FEED SERVICE

113 N  
2nd St  
Elgin NE

# CLASSIFIEDS

Deadline Tuesday at 10:00 a.m.

## HELP WANTED:

The Antelope County Historical Society is looking for a part time worker. Position is **EXECUTIVE DIRECTOR/CURATOR**. The position has summer hours and winter hours. Summer hours begin after

Memorial Day and run until after Labor Day. This will include Tuesday- Saturday from 1:00 PM- 5:00 PM and winter hours after Labor Day are Wednesday- Friday from 1:00 PM. - 5:00 PM Daily. Employ-

ee can set own hours for holidays. Employee must possess good computer skills such as Excel and Publisher, be organized, willing to hold meetings, work with board members, develop programs for the community, put together events in the community. Position starts immediately. For more information contact Rick Schuchardt at 703-474-9940. 16c tfn

## ANNOUNCEMENT

**BANKRUPTCY RELIEF!** Help stop Creditor Harassment, Collection Calls, Repossession and Legal Actions! Speak to a Professional Attorney and Get the Help YOU NEED! Call NOW 844-215-3629.

## FOR SALE - SENIORS

**PORTABLE OXYGEN** Concentrator? May be covered by Medicare! Reclaim independence and mobility with the compact design and long-lasting battery of Inogen One. Free information kit! Call 855-385-3580.

## HOME SERVICES

**DOES YOUR** basement or crawl space need some attention? Call Thrasher Foundation Repair! A permanent solution for waterproofing, failing foundations, sinking concrete and nasty crawl spaces. FREE Inspection & Same Day Estimate. \$250 off ANY project with code GET250. Call 1-844-958-3431.

**THE BATHROOM** of your dreams in as little as 1 day. Limited Time Offer - \$1000 off or No Payments and No Interest for 18 months for customers who qualify. BCI Bath & Shower. Many options available. Quality materials & professional installation. Senior & Military Discounts Available. Call Today! 1-855-451-2244.

## SERVICES - PUBLISHING

**BECOME A** Published Author. We want to Read Your Book! Dorrance Publishing-Trusted by Authors Since 1920 Book manuscript submissions currently being reviewed. Comprehensive Services: Consultation, Production, Promotion and Distribution Call for Your Free Author's Guide 1-877-858-2822 or visit [dorranceinfo.com/Nebraska](http://dorranceinfo.com/Nebraska).

## WANTED TO BUY

**WE BUY** 8,000 cars a week. Sell your old, busted or junk car with no hoops, haggles or headaches. Sell your car to Peddle. Easy three step process. Instant offer. Free pickup. Fast payment. Call 1-855-910-0760.

**WE BUY** Houses for Cash AS IS! No repairs. No fuss. Any condition. Easy three step process: Call, get cash offer and get paid. Get your fair cash offer today by calling Liz Buys Houses: 1-855-714-0010.

Are you travelling where your pet can't?

We have the perfect **SPOT** for them while you're gone.

*Call us today!*

The Pet Hotel and Spa

at TC Vet - Albion  
402-741-9000

## ELGIN LIVESTOCK SALES INC. FEEDER CATTLE SPECIAL MONDAY, FEB. 24 1 PM

\*\*With the size of this sale, PLEASE HOLD your Weigh Cows & Bulls for next week's auction\*\*

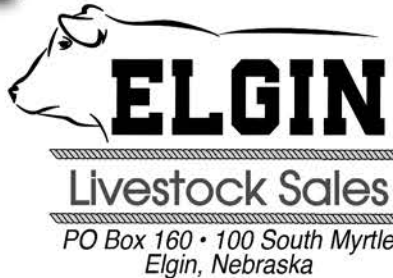
- C Heithoff** - 300 Steers, 140 Heifers --- BLK & BWF & a few Red, 650-900#
- D&T Kerkman** - 230 BLK & BWF & a few Red Steers & Heifers, 700-875#
- M Dinslage** - 190 BLK & a few RED Steers & Heifers, 675-850#
- A&T Spieker/Spieker Farms** - 180 BLK Angus & F1 Steers, 875-950#
- C&F Thiele** - 180 CharX, BLK & BWF Steers, 775-900#
- 3A Cattle** - 180 BLK & BWF, RED & RWF Steers & Heifers, 650-750#
- Koenig & Beckmann** - 100 Black Angus Steers & Heifers, 675-775#
- A Starman** - 75 BLK & BWF Steers, 750-775#
- S&J Wright** - 80 BLK & BWF Steers, 800-900#
- D McKillip & Sons** - 100 Black Angus Steers, 700-825#
- K Lazy T** - 80 BLK & BWF Steers, 600-625#
- Thiele Farms** - 70 Black Angus & a few Red Steers & Heifers, 575-675#
- Redding & Ringhoff** - 42 Black Angus Steers, 675-800#
- G Zegers** - 30 BLK & BWF Steers & Heifers, 400-525#
- C Baum** - 12 BLK & BWF Steers & Heifers, 650-830#
- Metz** - 6 Black Angus Steers & Heifers 450-550#
- A Pitts** - 120 Mixed Yearling Open Heifers, 850-900#
- B&R Penne** - 20 BLK Steers & Heifers, 650-750#
- D&M Dugan** - 200 BLK Angus & some BWF Steers & Heifers, 500-750#

Expect more cattle by sale time.

**UPCOMING SALES:**  
MAR. 3 - Feeder Cattle Special/Weigh Cows & Bulls

Full ad, preview videos & market report for past sales on FB & our website, [www.elginlivestock.com](http://www.elginlivestock.com)

View & Bid on CattleUSA



To consign your cattle, call  
Ted Baum  
402.843.8370  
Field Rep. Trey Baum  
402.843.6683  
Field Rep. Brenden Pelster  
308.750.3322



# Opinion

READ, REFLECT, RESPOND.

"To be persuasive, we must be believable; to be believable, we must be credible; credible, we must be truthful."

Edward R. Murrow

## New trade war — like the last one — would hurt Nebraska farmers, ranchers

It's hard to overstate the impact agriculture has on the State of Nebraska. The production of crops contributes \$25 billion a year to the state's economy, according to the University of Nebraska, and the impact extends to the cities, where suppliers, bankers and consultants make a living providing goods and services to farmers and ranchers.

Few states are as dependent on agriculture as ours, a state that has farming in its title, the "Cornhusker State." About a third of farm income comes from foreign trade.

### ALL THINGS NEBRASKA



State Correspondent Paul Hammel

But President Trump's recent calls for new tariffs on Mexico, Canada and China — the three largest trading partners for the U.S. — has prompted some chewing of fingernails across farm country.

The last time the current president launched a trade war with China, back in 2017, it caused nearly \$26 billion in agriculture losses nationwide, according to the USDA's economic researchers.

It prompted Trump to send an extra check to U.S. soybean producers to cover their losses. But the billions in checks didn't quite make farmers whole back then, and the Chinese found new outlets for corn, beans and pork, making them less dependent on what's grown here.

Recently, the state's farm leaders told reporters that eight years ago, farmers were in a much better position financially to take a loss. Not so now, they said, with input prices rising and crop prices tanking.

So they're concerned, because if a trade war erupts, farm goods are typically a prime target.

There was a sigh of relief recently when the president paused, for a month, the planned 25% tariffs against Canada and Mexico — the nation's two top trade partners.

But a trade battle is erupting with China. The 10% tariff ordered by Trump resulted in China retaliating by imposing new tariffs on American goods.

They include a new tariff on farm machinery, a sector that employs about 4,900 workers in Nebraska.

Some farm officials here expressed hope that our new president is just threatening tariffs as a negotiating tactic. One stated goal is to get Mexico to get tougher on the flow of black mar-



www.paulfellcartoons.com

PAUL FELL NPA 2025

ket fentanyl — a dangerous drug — into the country.

Maybe it's just a threat. Trump did back off on the tariffs against Mexico and Canada after leaders in those countries agreed to take steps to better secure their borders (steps some national media pointed out had already been underway) and after the Wall Street Journal labeled Trump's tariffs "the dumbest trade war in history."

But last time, the tough talk on

tariffs resulted in real losses for our farmers, who need foreign trade to sustain their operations. Economists predict that a new trade war would increase inflation and cause the loss of thousands of jobs in the U.S.

We'll have to wait and see how this round of tradesmanship plays out.

But Nebraska farmers are pretty clear on one point — they'd rather see increased sales to foreign countries than another "cover your losses" check

when a trade war goes south..

\*\*\*\*\*

Paul Hammel has covered the Nebraska state government and the state for decades. He retired in April as senior contributor with the Nebraska Examiner. He was previously with the Omaha World-Herald, Lincoln Journal Star and Omaha Sun.

A native of Ralston, Nebraska, he loves traveling and writing about the state.

## Night and day difference in leadership

In 2023, nearly 70 percent of the 105,000 overdose deaths in the U.S. involved fentanyl or another synthetic opioid. For the last four years, the lethality of these synthetic opioids was compounded by the failed open border policies of the Biden-Harris administration which allowed these highly potent drugs to flood in and destroy far too many American lives.

The status quo is finally beginning to change. Alongside the leadership of President Trump, House Republicans are working to restore the rule of law, support our border security agents, and end the opioid epidemic. In order to make sure we have access to all the necessary tools to accomplish this task, this week I supported passage of the HALT Fentanyl Act to permanently classify fentanyl analogues as a Schedule I substance.

Less than three weeks into his second term, President Trump's commitment to securing our borders and stopping the flow of fentanyl into our country is producing positive results. By driving a hard bargain, the president has yielded swift cooperation from Colombia, Mexico, and Canada before any new tariffs went into effect. This is outstanding news for the safety of the American people and has revealed a night and day difference between this administration and the last four years.

### FROM THE HILL



Congressman Adrian Smith

Since his first term, President Trump has elevated U.S. leadership — from his historic negotiation of the United States-Mexico-Canada Agreement (USMCA) and an agreement with China to laying the groundwork for a promising agreement with Kenya. When it comes to global trade policy, the United States must lead the conversation, whether it relates to market access for agriculture, intellectual property, digital regulations, or investor protections. There are numerous, longstanding challenges which must be addressed for the continued long-term success of our domestic industries and to the benefit of American consumers.

Going forward, I expect President Trump to continue to engage vigorously on behalf of American interests. To level the playing field, our engagement must be vigorous, and tariffs remain a key tool in the toolbox for effective negotiation. Make no mistake, our trade partners expect this.

As American agricultural producers and manufacturers have suffered from the Biden administration's loss of ground in market access and failure to address high input costs, the very best thing we can do for our hardworking producers is to open and maintain access to new markets for their world-class products. I have encouraged the current administration to remain vigilant and prepared to mitigate the impact of potential retaliation on our domestic industries.

This week, the Office of the United States Trade Representative announced Mexico's full compliance with its USMCA commitments to accept imports of U.S.-grown corn. While President Biden could have done more to secure this result years ago, this is a positive step for U.S. producers, agricultural innovation, and science-driven, rules-based trade. Robust engagement will remain essential as we enter the 2026 USMCA review.

Without enforcement of our trade partner's obligations, we cannot have healthy and productive trade relationships. The world was watching when President Biden failed to stop the flow

See SMITH, Page 5 ▶

## Putting maximum pressure on Iran

The Islamic Republic of Iran is the leading state sponsor of terrorism. They've spent decades funding terror attacks all over the world. Iranian proxies have launched thousands of missiles at Israel. In fact, Iran itself launched the largest ballistic missile attack in history against Israel last year.

Iran doesn't just chant 'death to Israel,' though. They chant 'death to Amer-

ica' as well. Iranian proxies murdered American servicemembers. They've tried to assassinate President Trump. Their proxies have launched missile attacks against U.S. Navy warships and commercial cargo vessels. Most concerning, they are closer than ever to possessing a nuclear weapon. That would greatly threaten the security of the United States and our allies.

Yet for four years, President Biden

chose a policy of appeasing Iran. The Biden administration relaxed sanctions on Iran and enabled them to generate \$100 billion in oil revenue. They unfroze \$6 billion in Iranian assets on the anniversary of 9/11. And they continued to push for a renewed Iran nuclear deal — even though Iran constantly cheated and continued pro-

See RICKETTS, Page 5 ▶

## The best option for paid family and medical leave

In America, our news cycle is often fraught with controversy and dispute. From watching the news or scrolling social media, it might seem like there are few issues where Americans see eye to eye. Of course, it may be true that we disagree on some big issues, and those issues may be important. But behind the headlines and social media posts, there are still things Americans agree on.

### WASHINGTON REPORT



U.S. Senator Deb Fischer

One of those is paid family and medical leave. The Pew Research Center found that the vast majority of Americans support paid parental leave — up to 82 percent. Eighty-five percent of Americans say people should receive paid leave to deal with their own serious health conditions, and 67 percent say they should receive leave to care for a family member with a serious health condition.

We rarely see Americans so united on other issues. But it's for good reason that Republicans and Democrats come together on paid family leave.

The reality is that Americans shouldn't have to choose between their paychecks and caring for their families. Whether an employee is caring for a newborn, nursing an aging parent, or recovering after surgery, they deserve time to tend to themselves or their loved ones without risking the income they need to survive. That's why I spearheaded our nation's first-ever federal family leave policy in 2017 with Senator Angus King (I-Maine). As part of the 2017 Tax Cuts and Jobs Act, we passed a Paid Family and Medical Leave tax credit that encourages businesses to offer leave to their employees. Employers are able to receive the tax credit if they voluntarily offer up to 12 weeks of paid leave. Our credit increases access to paid leave without penalizing small businesses with limited resources, like a government entitlement program or a mandate would.

Almost eight years later, this tax credit is about to expire. And Congress is set to work on another tax package. I'm pushing hard to get my bill with Senator King, the PFML Tax Credit Extension and Enhancement Act, included in that tax package. This is a priority for Americans, a priority for Nebraskans, and a priority for me as I negotiate with my colleagues in the Senate.

I reintroduced our bill this week with Senator King, and a bipartisan group of our colleagues in

the House introduced companion legislation. Our legislation makes the PFML tax credit we passed in 2017 permanent, as well as improving the credit. It supports additional options for financing paid leave, such as paid family leave insurance. It also allows employers to begin offering paid leave to workers sooner after being hired.

The bill includes a strategy for educating employers and employees about the option to receive this credit. It requires the Small Business Administration and the Internal Revenue Service to provide targeted outreach and assistance to those who need it, which will raise awareness of the credit and expand the number of Americans who have paid leave.

Passing this bill in our upcoming tax package will deliver on the promises Republicans made to the American people this November. We promised to make families' lives better, more prosperous, and more affordable. More access to family leave will contribute to that goal. Our tax credit is a tried-and-true method, one with a bipartisan track record of success. It's the best option for paid family and medical leave: the one that will do the most good with the smallest price tag.

I'm determined to get the PFML Tax Credit Extension and Enhancement Act passed to expand access to leave for more Americans.

### Numbers to Know

President Donald J. Trump, 1600 Pennsylvania Avenue, Washington, D.C. 20510; phone (202) 456-1111.

U.S. Senate Website: www.senate.gov

Senator Deb Fischer: 825 B Hart Senate Office Bldg., Washington D.C. 20510. Phone: (202) 224-6551. Fax: (202) 228-1325.

Senator Pete Ricketts: 386A Senate Russell Building, Washington, D.C. 20510. Phone (202) 224-4224.

U.S. House Website: www.house.gov

Representative Adrian Smith: 503 House Office Bldg., Washington, D.C. 20515-2703. Phone (202) 225-6435. Fax: (202) 225-

0207. E-mail: http://www.house.gov/writerep/.

Nebr. Unicameral Website www.unicam.state.ne.us

Governor Jim Pillen: Executive Suite, P.O. Box 94848, Lincoln, NE 68509. Phone: (402) 471-2244.

Lieutenant Governor Joe Kelly: Office of the Lt. Gov., P.O. Box 94863, Lincoln, NE 68509-4863. Phone: (402) 471-2256.

District 40 State Senator Barry DeKay: P.O. Box 94604, Lincoln, NE 68509. Phone: (402) 471-2801. E-mail: bdekay@leg.ne.gov.



Volume 142, Wednesday, February 19, 2025 Number 22

Published weekly on Wednesday at Elgin, NE 68636 Entered at the Elgin Post Office and Periodicals Postage Paid at Elgin, NE 68636 Telephone: (402) 843-5500



ER Publishing LLC Dennis L. & Lynell M. Morgan Publishers and Editors

### Annual Subscription Rates by Mail

Antelope, Boone, Wheeler counties (except Ewing and Tilden) .....\$45 Elsewhere in NE .....\$48 Out Of State .....\$53

### ATTENTION POSTMASTER:

Send address changes to: The Elgin Review PO Box 359 Elgin, NE 68636

Email: elginreview@yahoo.com

Online: www.elginreview.com



It Pays To Advertise in The Elgin Review!

AGRI AFFILIATES, INC. 313.18 ± ACRES ANTELOPE COUNTY, NEBRASKA LAND FOR SALE ANTELOPE COUNTY HALF SECTION

Ricketts

FROM Page 4 censing nuclear materials under the first deal! Biden's weakness emboldened Iran and made Americans less safe.

WASHINGTON REPORT



U.S. Senator Pete Ricketts

Smith

FROM Page 4 of fentanyl or hold the CCP accountable for its trade commitments.

push our allies to do the same. During his first administration, Trump's sanctions drained Iran's foreign reserves from \$122.5 billion to less than \$14 billion.

would include export controls, travel bans, asset freezes, and other restrictions on those involved in Iranian nuclear and missile activities.

nuclear-armed Iran would directly challenge STRATCOM's mission and the safety of the women and men serving there.

Pope John speech team earns three medals in opener

Matthew Kerkman, Christian Preister get second in novice duet

The Pope John XXIII Central Catholic speech team opened the season recently at Atkinson West Holt High School.

City of Elgin SUMMER HELP WANTED Pool Manager Pool Staff Summer Maintenance Help

Boone County Health Center CNA Hybrid Course 30 hours on-line learning / 46 hours in person lab time

ANTELOPE COUNTY ROAD & BRIDGE DEPARTMENT SEASONAL ROAD EMPLOYEES

JONNY DODGE Chrysler Jeep, Inc. W. Hwy 275, Neligh, NE

Dean's MARKET weekly flyer online at www.elginreview.com

Draper Insurance Agency, Inc. Your locally owned Independent Insurance Agency

Snider Memorial Funeral Home Jay Snider

Precision Repair 402-843-2181 Tire Service, Oil Changes and More!

The Elgin Review Elgin's Number One News Source

Elgin Body & Glass Contact Judsen Sehi

In a world that doesn't always make sense, find answers in faith!

St. Boniface Catholic Church Elgin, NE

Trinity Lutheran Church Elgin, NE

MidplainsAg Precision Ag protects the bottom line.

LEVANDER FUNERAL HOMES 402-843-5400

Do Unto Others We tend to get from others what we project to them.

St. Bonaventure Catholic Church Raeville, NE

Elgin Community Christian Church Elgin, NE

AMH Elgin Family Practice Clinic 877.887.5440

ELGIN APPLIANCE & MORE 402-741-5077

Do to others as you would have them do to you. Luke 6:27-38

Park Congregational U.C.C. Church Elgin, NE

St. John's Catholic Church Rural Clearwater, NE

Insurance Mart Janet - Tracey Tonya

bank of ELGIN Elgin, NE

Do to others as you would have them do to you. Luke 6:27-38

St. John the Baptist Catholic Church Petersburg, NE

St. Paul Lutheran Church Chambers, NE

Good Samaritan Society ALBION

ELGIN PHARMACY AND GIFT 402-843-5555

For from him and through him and for him are all things.

THE WILLOWS Assisted Living in Neligh, NE

Bartlett Church of Faith Bartlett, NE

Immanuel-Zion Lutheran Church ELCA

Elgin Veterans' Medical Clinic

Antelope Memorial Hospital Healing Body, Mind and Spirit.

THE WILLOWS Assisted Living in Neligh, NE

THE WILLOWS Assisted Living in Neligh, NE

Cattle Sales on Mondays, 1 p.m. ELGIN Livestock Sales

Faith is confidence is what we hope for and assurance about what we do not see.

GPSbank GREAT PLAINS STATE BANK

Scott's Backhoe & Well Service Petersburg

THE WILLOWS Assisted Living in Neligh, NE

THE WILLOWS Assisted Living in Neligh, NE

Cattle Sales on Mondays, 1 p.m. ELGIN Livestock Sales

Faith is confidence is what we hope for and assurance about what we do not see.

Starman Seed & Supply, Inc. 402-843-0445

Elgin One Stop Sleepin Inn 402-843-2100

THE WILLOWS Assisted Living in Neligh, NE

THE WILLOWS Assisted Living in Neligh, NE

Cattle Sales on Mondays, 1 p.m. ELGIN Livestock Sales

Faith is confidence is what we hope for and assurance about what we do not see.

eat fresh. Two nearby locations: 402-395-6135



## Bartlett News

Wheeler Central hosted basketball games Tuesday evening against Elgin Public-Pope John.

It was not a good night for CWC with EPPJ winning both varsity games.

The night was packed with many events. Among them were a soup supper fundraiser for the Teammates program, Teammates Mentor Appreciation Night, 'Little Girls Dance routine and a Wheeler Central pep band performance.

The band made history. There has been no Wheeler Central Pep Band at a home basketball game for over six years.

Students participating were Franklin Schmidt, Hunter Renner, Jai Lynn Harrison, Aidan Maddux, Trey Smith, Corbin Kasselder, Dawson Kluver, Denina Skorcz, Casey Freouf, Anslee Wright, Garret Growcock and Jerrin Kleeb.

Pep band music selections were *The Star Spangled Banner*, *Jeopardy*, *Tequila* and *High Hopes*.

Parent Teacher's Conferences were held Wednesday afternoon from 2:30-6:30 p.m.

Attendance was not as good as the fall conferences, but we always appreciate those that do come.

Submitted by  
Sherry Tetschner

## GPSB to move to new location at O'Neill

Great Plains State Bank is pleased to announce that on Monday, February 24, its O'Neill Branch will relocate to their new building at 620 E. Douglas Street.

The new branch, built by Single Source, will host a spacious bank lobby, conference room, and two drive-up lanes as well as a 24-hour drive-up ATM.

CEO, Rick Chochon says, "We are excited about our new building that will cement our location in the heart of downtown O'Neill reflecting GPSBank's commitment to providing great personal service with local decision making."

Since its arrival in O'Neill almost nine years ago, Great Plains State Bank has made a significant impact on the footprint of 'community banking.' O'Neill is one of five branch locations offering an extended range of banking services and products.

O'Neill Market President, Jacy Napier says, "We have had the privilege of growing alongside local families and businesses since our humble start in O'Neill. Our new space will allow us to continue to build relationships while joining the thriving downtown."

Napier went on to say, "This move reinforces our commitment to the community and surrounding areas."

A grand opening celebration for the public will be Friday, March 14 from noon to 2 p.m. as a kick-off to the annual St. Patrick's Day festivities.

A Ribbon Cutting with the O'Neill Chamber will take place at 1 p.m. Cookies and coffee will be served.

## Back

◀ FROM Page 3

Helen and August Kerkman were honored as the "King and Queen of Hearts" on Valentine's Day, February 14, at the Elgin Senior Citizens/Community Center.

Jerry Wilkinson of Elgin was named "Agent of the Year" for 1994 by the Omaha Agency of Ameritas Life Insurance Corp.



Wheeler Central Teammates Mentoring Program Appreciation Night was held Tuesday, February 11 in between the Elgin Public-Pope John vs. CWC basketball games. Shown above are mentors and mentees. Wheeler Central's program has 63 matches of mentors and mentees. A soup supper fundraiser was held that evening to raise money for 'Teammates'.



The CWC Dance Team girls hosted a 'Little Girls' Dance team routine with Lindsay Metschke as coordinator. The girls danced at the February 11th basketball games in Bartlett and February 14th in Chambers during the basketball games.

Photos submitted

## Spinning Tales

### Wrestling combines joy and agony on the mats

GREELEY — Living on the edge. Those four words sum up what high school wrestling is all about.

There was no better example of 'living on the edge' than what the Wolfpack team experienced this past Friday and Saturday.

For no other sport does the competition feel so intense. Athlete against athlete, no pads for protection. Singlets, wrestling shoes go together with ear protection. All each wrestler has are the skills borne of sweat and determination.

No other sport requires the type of discipline that wrestling does. Not only must they be strong, they must watch every calorie they consume so as to make weight week after week.

No matter how much encouragement one gets from coaches, family and friends, it all comes down to the man on the mat. To win, the athletes must combine all that he has learned into just one thing - the will to win.

These are my thoughts, my observations, having sat on the edge of the mats watching the faces of these young warriors.

The Kallhoff brothers were the first Wolfpack wrestlers to finish their season. The sophomore, Gavin, fought hard but paired against wrestlers with winning records, victories eluded him. The senior, Landon, had the look of a young man determined to have one more big moment on the mat. It came in consolation round #2. Having lost his first match by pin in 25 seconds, Landon has the look of a man possessed. Stepping onto the mat to face North Central's Trace Kaupp (3-18), Kallhoff is the aggressor and, entering the second period, takes control and pins Kaupp for just his second victory of the season. Satisfaction best describes the look on his face after the match.

Kallhoff's tournament run ends in the next round.

I truly admire the wrestlers who fight and finish the season even though victories are few and far between. Sometimes success isn't defined by wins and losses, but by fighting through adversity.

There are always surprises at district wrestling tournaments. That's how I feel about sophomore Justice Blecher. The draw did him no favors as from the beginning he faced tested foes. With family looking on, just feet off the mat, Blecher came up short on both of his matches. I didn't expect him to twice get pinned. He, like his underclassmen teammates, shows the promise of better days ahead.

Two of the five Wolfpack wrestlers earn their way to day two of the tournament.

Grady Drueke has gotten better as the season progressed. A state qualifier last year, he's saved his best wrestling for February. His biggest victory Friday came with the season on the line. Having won two matches and lost one, he is in consolation round #4 and GACC's Ryder Anderson-Ray is thinking victory with a 10-0 lead. Drueke has other ideas and seizes the moment, gaining the advantage and pinning his foe. It's a reversal-of-fortune for the Wolfpack wrestler, one he won't soon forget. The victory sent him to the 'heartbreak' round Saturday afternoon.

And heartbreak it was for the Wolfpack. Weeping Water's Kolby Nash pinned Drueke in the second period, denying Drueke back-to-back trips to state. Grady had a great season. He started out slow, but rounded into form and made a solid

showing in Greeley. Next season looks promising for him.

Veik, the Wolfpack's best wrestler record-wise (22-9 to start the tournament) had a great Friday. After an opening round bye, Veik records two third period pins to advance to the semi-final round Saturday. There, against Wisner-Pilger's Keegan Poppe, he fell behind early and lost four to one.

Veik, too, saw his chance to go to state tied to the heartbreak round. And, then by the slimmest of margins, one to zero, he defeated Arcadia/Loup City wrestler Joseph Ducker to qualify for state. As family cheered in the stands, he embraced his father/assistant coach Adam Veik just off the mat. Coming up one win short last year, this year is sweet redemption.

He went on to place third in the tournament by defeating Valen Searight of Lutheran High Northeast. Veik, the Wolfpack's most consistent wrestler this season, will represent EPPJ well at State!

Go Pack!!

### SPINNING TALES



Publisher  
Dennis Morgan

### Elgin Community Center Menus

**Monday, February 24:** Tator tot casserole, lettuce salad, pears, bread/butter, milk.

**Tuesday, February 25:** Cheesy broccoli soup, ham sandwich, carrots/celery, cheese/crackers, cottage cheese, pineapple, bread/butter, milk.

**Wednesday, February 26:** Chicken & rice casserole, broccoli, strawberry/peach mix, bread/butter, milk.

**Thursday, February 27:** Ham, au gratin potatoes, peas, peaches, bread/butter, milk.

**Friday, February 28:** Taco salad, refried beans, Spanish rice, fruit cocktail, bread/bu-

ter, milk. (All meals served with bread & butter.

Menus are provided by the Community Center and are subject to change).

Suggested price is \$7 per meal for persons 60 years of age and older. Under 60 is \$10.00. Serving starts at 11:45 a.m. and ends around 12:15 p.m.

Meals are served Monday thru Friday.

Takeout starts at 11:30 a.m. to reserve a meal, for that day. For a great meal, come to the community center!

**Jason Koenig**  
Mineral Sales

North Central/Northeast Nebraska  
Cell 402-336-7083  
Office 800-658-3120  
jkoenig21@hotmail.com  
www.lifeproductsinc.com

**Ag Land Realty, LLC**  
www.aglandrealtyllc.com

Experienced in Residential and Ag Land Sales

**JEFF TEMME** Sales Associate  
402-843-8440 • 402 360 4435 (broker)

- Real Estate
- Land Management
- Auctions

**ELGIN VETERANS' MEDICAL CLINIC**  
An Outpatient Department of Boone County Health Center

116 N 2nd St. Hwy 14  
**402-843-5910**

**PROVIDER AVAILABLE MONDAY-FRIDAY.**

- Joel Travis, MD
- Sean Kohl, MD
- Bridgette Pudwill, MD
- Jason Olnes, PA-C
- Danielle Krohn, APRN

**CALL FOR AN APPOINTMENT!**

Visit us online at [www.boonecohealth.org](http://www.boonecohealth.org)

**HELP WANTED**

**HOSPITAL-OUTPATIENT MEDICAL CODER**  
Part-Time or Full-Time

**HOUSEKEEPING/ ENVIRONMENTAL SERVICES TECHNICIAN**  
Full-Time

**PHYSICIAN ASSISTANT OR ADVANCED PRACTICE REGISTERED NURSE**  
Full-Time

**REGISTERED RADIOLOGIC TECHNOLOGIST**  
Full-Time

**RETAIL PHARMACY TECHNICIAN**  
Full-Time

**Antelope Memorial Hospital**  
102 W 9th St., Neligh, NE 68756  
**402-887-4151**

*Antelope Memorial Hospital*  
Healing Body, Mind and Spirit

This institution is an equal opportunity provider and employer.

**HELP WANTED**

Elgin Public Schools is currently accepting applications for a

**FULL-TIME PARAPROFESSIONAL**  
position for the 2025-2026 school year.

Please contact Mr. Mike Brockhaus at Elgin Public via email or phone:  
**mike.brockhaus@elgineagles.org**  
or **402-843-2455**.

Dine In or Take Out  
Elgin Knights of Columbus

**Fish Fry**

Friday, **March 7**  
5-7:30 pm at the Elgin KC

**SERVING:** Breaded Fish along with Au Gratin and Baked Potatoes, Salads and Desserts.  
**\$15.00** Adults  
**\$8.00** 6-12

Join us for great food & support of our Knights!



# FEBRUARY - time to talk...



# Heart Health

## “You can’t beat them, they’re good!”

**N**ELIGH — When one comes to Antelope Memorial Hospital to go to the second floor cardiac rehab facility, they have a choice - to climb the steps or take an elevator.

For LeRoy Borgelt, the last few months has seemed like taking one step at a time, as he ‘climbs’ towards resuming a healthy, natural lifestyle which he has known for many of his 80+ years.

Tilden has always been home. Yes, he’s lived in other places like Montana and Washington state, and, when he served his country in the U.S. Army he was stationed in Germany, but Tilden has been home. It’s where he was raised, where he grew into a young man.

It was near Tilden that he and his wife of 57 years, Pat, raised two children, Gina and Jeff. To make ends meet, he worked at a service station for awhile, then as a tractor mechanic.

“I liked working with my hands, tearing apart tractors,” he said. “I had a good shop foreman who was Bill Ross, and I worked with a bunch of good mechanics.” Later, he worked at the local grocery store running the produce department, then went to work for about 20 years at Rutjens Construction. Hard work never seemed to bother him. He embraced it, but it slowly began to take a toll on his body.

“I put in a full day’s worth of work and then go home and work some more,” he said.

Life has a way of changing your focus, your direction when you least expect it.

Seven years ago he had major heart surgery to replace his aortic valve. The surgery was done in Norfolk after his medical team determined that the heart valve had become defective.

Within the past year, Borgelt began to notice that things just didn’t seem to be right. He tired easily and suffered from shortness of breath. “The doctors told me that they would have to put a new valve in ... I didn’t really want to go through that again.”

He wasn’t looking forward to doing rehab again because it was tough and tiring the first time.

“I was younger then, too, but I went through it (rehab) for three months. After Medicare ran out, he decided to pay \$5 each time for an hour workout. “You can’t beat that,” he said, noting

**LeRoy Borgelt**, of Neligh, is taking his cardiac rehab therapy seriously as he is looking forward to warmer weather and working in his garden. He is pictured with his cardiac team at Antelope Memorial Hospital, l-r, Liz Fursternau, Michelle Stearns, Molly Navratil and Shannon Tegeler. Photo lower left: Borgelt gets to work on the stepper during a recent therapy session.

*E-R photos/DMorgan*



that it was the best \$5 he ever spent.

His heart valve was one thing, but there was more going on in his life. He said Pat had dementia. “It was a 24/7 job to take care of her and, after a while, it got to me so we took her to the rest home in Battle Creek and then we lost her.

“I just kind of went down really quick,” he said. But, as time passed, he came to the realization that the surgery was necessary if he wanted to again do the things that make living worthwhile.

“It was either get it done or die,” Borgelt said. “So I got it done.”

So, just days before Christmas 2024, Borgelt had valve replacement surgery in Omaha. That marked the beginning of a long ordeal as complications arose after surgery, wires that had been attached were ripped apart. “The doctor told me those wires cut through me like a cheese slicer does cheese. He (the doctor) had to go in and take all that wire back out. After surgery to fix the wire problem, more complications around and another surgery was necessary.

So, what was meant to be one surgery became multiple surgeries before he was able to leave the hospital.

“It was more severe than I think anybody realized,” he said. “I could tell and it scared the hell out of me ... I figured that was it, I thought I was done.”

In moments like that, he said you come to the realization that ‘if it happens, it happens.’ But, I’m supposed to be here for something. God only takes us when he’s ready for us.”

He progressed to the point that he was taken to Madonna in Omaha for rehab. After six days there, he returned home and soon began cardiac rehab at AMH in January.

Working with Molly and the other nurses at AMH cardiac rehab, he’s just getting started to feel better to again.

“I’ve done all this before,” he said about cardiac rehab, “and it paid off.” Being honest, he said the rehab it not any easier the second time around.

While the rehab may be tough, it’s working. Borgelt said the nurses there (Molly, Shannon, Liz and Michelle) “are all good gals there.” They’re, he said, the kind of people who care about you not just while doing rehab, but away from the hospital as well.

“They’re unbelievable,” he said. “They know more than you think they



do. And the thing about it is you can come up here, when you don’t want to do rehab, but they make you enjoy it. They just got a way of doing it that makes it fun.”

With a defiant spirit, he said, “I’m more tired than retired.”

When he doesn’t come to AMH, he’s at home. He looks forward to visits from his grandson Anthony after school. Anthony is a senior in high school.

“When I’m home alone, I like to sit in my recliner and watch TV, western moves ... I’m watching them through my eyelids (sleeping).”

It’s safe to say, Borgelt is looking forward to the months ahead. To watching and being part of family activities. To spring, when he gets his lawn mower out and makes his property look great, to ‘playing’ in his garden. “I didn’t get it tilled this fall, because I just didn’t feel up to it. So that’s going to have to be done this spring. I hope I’m fit enough to do it, but I don’t know if the kids will let me.” The garden has tomatoes, onions, peppers, eggplant, a little bit of everything.

“That garden is me, Pat used to take care of the flowers. Well, she got them started and then I would take care of them,” he said. “I’ve developed more appreciation, I’ve found more joy, working with plants ... I just like being outside.”

**USDA Inspected**

**PORK BUNDLE SPECIAL**

15# Pork Roast or Pork Steak • 10# Boneless Sirloin • 60# for **\$279<sup>00</sup>**

Pork Chops • 5# Pork Cutlets • 10# Bulk Pork Sausage, Ground Pork or Bacon • 10# Ring Sausage • 10# Pork Featherbones

**DEAN'S MARKET**

Downtown Elgin 402-843-5300

Elgin's "Heart Healthy" Food Center

## Trust Your Heart To Our Cardiac Rehab Team.

Contact your health care provider for an appointment in cardiac rehab.

**OUR HOURS:**  
M, W & F  
7 a.m. - 5 p.m.



AMH Cardiac Rehab Staff (l-r): Michelle Stearns, RN; Liz Fursternau, RN; Molly Navratil, RN; and Shannon Tegeler, RN and director.

**Antelope Memorial Hospital**  
Healing Body, Mind and Spirit



Follow us on facebook:  
Antelope Memorial Hospital

AMHNE.ORG 402.887.6270 102 WEST 9TH, NELIGH

Find out more about heart health at  
**heart.org**







# Heart Health

## Pelster has so much she still wants to do

**P**ETERSBURG — There's a picture window on the south side of the house, a kitchen table and chairs on one side. Outside, snow covers the grass and, off in the distance are the buildings which makes up Petersburg.

The sun shines through these windows. It's peaceful here from one season to another as the sun's rays light up the room.

The table and chairs are just a part of the modern home. But, here, around this table, coffee has been shared, stories have been told, friendships have been made and grown.

For Pauline, age 82, and Delmer J. Pelster, this area is the land where they've raised a family, where they have lived. They've been married for 63 years having celebrated their most recent anniversary last month, caring for one another when times were good and (healthwise) not so good. They are surrounded by good neighbors who help each other out in times of need, whether it be working cattle or other farm tasks.

For Pauline, her health hasn't always been the best and she's currently doing cardiac rehabilitation at the Rudman Rehabilitation Center (RRC) under the auspices of Boone County Health Center (BCHC) in Albion.

The RRC is located in the new wing of the hospital. "RRC is a whole new part of the hospital," she said. "It's just wonderful. It's more open. It's just real nice."

It's here where men and women go when it's time to fix their most precious organ, the heart. The word says it all - rehabilitation - and the people who work there become like family to those whom they care for.

Many members of their family work, in one capacity or another, at BCHC.

"It's only natural that where I would want to go ... We can't go any place else."

And it's in these hospital walls where Pelster finds herself now, rehabbing her heart.

Having had rehabilitation services twice in the old part of the hospital, she said she recently had open heart surgery (five hours on the table) in



Pauline Pelster works the NuStep hard during her cardiac rehab session. She knows that the work will pay off as she regains strength and renewed enthusiasm for her hobbies.

Norfolk where she stayed for quite a while. Her heart issues were tied to high blood pressure, something she has battled for quite some time.

She said stents in her heart, put there close to 20 years ago, were causing problems and causing a buildup of fluid in the space around her heart. So she had open heart bypass surgery. There were other issues to deal with as well.

"I've been close to death a few times so when they said (after examining me) go get the

cardiologist, I wasn't scared," she said, noting she was at peace with what needed to be done and the possible consequences.

"I knew something had to be done because I was going to the emergency room a lot ... The last time, the doctor looked at me and said you're filling up with fluid ... Something's got to be done."

Approximately five days after the surgery she was home and it wasn't long before she was doing rehab in Albion.

"I'm going to Albion now because of the stents. She goes three days a week and Delmer is nearby.

"Jamie and Abby, they're very nice, they help me a lot," Pauline said. "(Rehab) has gotten a lot better from the first time."

By getting better, she can look forward to the activities she likes to do.

One can often tell what a person is all about by looking at their hands. Pauline is no different. The basement of the Pelster home is where she's spent many hours working on quilts. But, as Delmer said, she doesn't go down there as much now as she used to. "We kind of keep her out of there, because she totally gets out of breath," he said.

So, she works with a number of ladies now at St. John the Baptist Catholic Church to work together to make quilts.

"With the help of Doris Faust, we got it started again," she said. They meet on Tuesday afternoons at Werner Hall.

"And I love to crochet, too," she was quick to point out. "I've crocheted for years."

Pauline is also a fabulous cook, knowing how to prepare farm meals, many featuring fried chicken which she has become known for through the years.

"She's just one of many good cooks in our neighborhood," Delmer said

When she feels well, there's nothing she won't do.

That's why regaining her health is so important to her now because there's so much she still wants to do.

Pauline was raised with a strong work ethic. Her father was a laborer and her mother worked at a motel making beds and doing stuff. Her mother came from Germany to America, barely nine or 10. It was

the year after the Titanic sank and her mother told her she saw icebergs like the one which sank the great ship. "Mom said when they went past the icebergs, the captain blew the whistle," she said about her mother.

Not one to back down from a challenge, Pauline's health has been a challenge. "They said I'm one of a kind," she responded. "Every doctor says that because when I go in and say I'm sick, I'm sick. I can be feeling great one day and the next I can be really sick. That's just the way I am." And that's why Delmer is never far away.

She said her heart doctors tell her she's a mystery. And she agrees. "I am very very, very happy and very, very lucky and I thank God for it," Pauline noted.

Pauline is one of the many millions of Americans who has diabetes and that's just another issue that affects her heart disease.

With all that she's dealt with, health wise, through the years, she said her faith has helped her get through those difficult times.

"I pray a lot," she said about being Catholic and about her husband Delmer. "I don't know what I would do without him. He helps me with everything."

That's what you do when you've been in love and married for 63 years.



Delmer J. and Pauline Pelster proudly show off a family portrait. Family reminds them both that they both have very good reasons to work hard at being healthy.

## HEARTFELT Healthcare

**In our modern facility.**

downtown Elgin  
**402-843-5910**

### Elgin Veterans' Medical Clinic

An Outpatient Department of the Boone County Health Center

**WE**

**OUR READERS!**

Take care of your heart health -- we want you with us for many more years.

## Keep your heart healthy

Heart disease is the leading cause of death for both men and women in the United States. Take steps today to lower your risk of heart disease.

To help prevent heart disease, you can:

**Eat a heart-healthy diet**

- Get active
- Stay at a healthy weight
- Quit smoking and stay away from secondhand smoke
- Control your cholesterol, blood glucose (sugar), and blood pressure
- Drink alcohol only in moderation
- Manage stress
- Get enough sleep

**Am I at risk for heart disease?**

Anyone can get heart disease, but you're at higher risk if you:

- Have high cholesterol, high blood pressure, or diabetes
- Smoke
- Have overweight or obesity
- Don't get enough physical activity
- Don't eat a healthy diet
- Had a condition called preeclampsia during pregnancy

Your age and family history also affect your risk for heart disease. Your risk is higher if:

- You're a woman over age 55
- You're a man over age 45
- Your father or brother had heart disease

- before age 55
  - Your mother or sister had heart disease before age 65
- But the good news is there's a lot you can do to prevent heart disease.

**What Is Heart Disease?**

When people talk about heart disease, they're usually talking about coronary heart disease (CHD). It's also sometimes called coronary artery disease (CAD). This is the most common type of heart disease.



When someone has CHD, the coronary arteries (tubes) that take blood to the heart are narrow or blocked, which makes it hard for oxygen-rich blood to get to the heart. This happens when cholesterol and fatty material, called plaque, build up inside the arteries.

Several things can lead to plaque building up inside your arteries,

- including:
- Too much cholesterol in the blood
  - High blood pressure
  - Smoking
  - Too much sugar in the blood because of diabetes

When plaque blocks an artery, it's hard for blood to flow to the heart. A blocked artery can cause chest pain or a heart attack.

SOURCE: odphp.health.gov

Are you at risk for **Heart Disease?**

Call today to visit with one of our health professionals.



**ELGIN CLINIC:**  
Dr. Dawson, Dr. Rudloff, Niewohner, APRN and Murphy, PA-C

**NELIGH CLINIC:**  
Dr. Dawson, Dr. Rudloff, Dr. Osborn, Dr. Thoendel, Sucha, PA-C, Niewohner, APRN and Murphy, PA-C

**CLEARWATER CLINIC:**  
Dr. Dawson, Dr. Rudloff, Dr. Thoendel and Sucha, PA-C

# AMH Family Practice

in affiliation with Antelope Memorial Hospital with clinics located in **Neligh • Clearwater • Elgin • Orchard • Tilden**

Antelope Memorial Hospital **402.887.5440** or visit **amhne.org**

## When it comes to your heart, we don't miss a beat.



**Meet our Cardiac Team:**

Left to right: Traci Beckman, RN; Katie Schwartz, RT, RN; Erica Zack, Cardiology Technician; Gayla Oakley, RN; Angie Swantek, RN; Colton Pelster, Exercise Specialist; Janet Feik, RN; Nettie Horan, RN; Melissa Nissen, Receptionist; Abbie Nelson, Exercise Specialist.

## RUDMAN REHABILITATION CENTER

402.395.3156

Boone County Health Center  
Albion, Nebraska • 402-395-2191

[www.boonecohealth.org](http://www.boonecohealth.org)





# American Heart Association. Healthy for Good™ Life's Essential 8™

are the key measures for improving and maintaining cardiovascular health, as defined by the American Heart Association. Better cardiovascular health helps lower the risk for heart disease, stroke and other major health problems.



- HOW TO EAT BETTER
- HOW TO BE MORE ACTIVE
- HOW TO MANAGE BLOOD SUGAR
- HOW TO MANAGE WEIGHT
- HOW TO CONTROL CHOLESTEROL
- HOW TO MANAGE BLOOD PRESSURE
- HOW TO QUIT TOBACCO
- HOW TO GET HEALTHY SLEEP

## HOW TO EAT BETTER

**CREATE A HEALTHY EATING PATTERN**  
Make smart choices and swaps to build an overall healthy eating style. Watch calories and eat smaller portions.

**ENJOY** vegetables, fruits, whole grains, beans, legumes, nuts, plant-based proteins, lean animal proteins, skinless poultry, fish and seafood.

**LIMIT** sweetened drinks, alcohol, sodium, red and processed meats, refined carbohydrates like added sugars and processed grain foods, full-fat dairy products, highly processed foods, tropical oils like coconut and palm.

**AVOID** trans fat and partially hydrogenated oils (found in some commercial baked goods and fried foods).

**READ NUTRITION LABELS**  
Learning how to read and understand food labels can help you make healthier choices. When you have more than one choice, compare nutrition facts. Choose products with lower amounts of sodium, saturated fat and added sugars.

**TIPS FOR SUCCESS**

- WATCH CALORIES**  
Eat only as many calories as you use up through physical activity. Understand serving sizes and keep portions reasonable.
- COOK AT HOME**  
Take control over the nutritional content of your food by learning healthy preparation methods.
- LOOK FOR THE HEART-CHECK**  
The Heart-Check mark helps you find foods that can be part of a healthy eating plan.
- IN NEED OF INSPIRATION?**  
The American Heart Association has hundreds of heart-healthy recipes to choose from.

Learn more at [heart.org/lifes8](http://heart.org/lifes8)

## HOW TO BE MORE ACTIVE

**MOVE MORE**  
Adults should get a weekly total of at least

**150 MINUTES** OR **75 MINUTES**  
of moderate aerobic activity (water aerobics, social dancing, gardening) OR a combination of both, spread throughout the week.

**BE STRONG**  
Include muscle-strengthening activity (like resistance or weight training) at least twice a week.

**ADD INTENSITY**  
Increase time, distance, amount or effort for more benefits.

**SIT LESS**  
Get up and move throughout the day.

**KIDS & TEENS**  
should get at least 60 minutes of physical activity every day, including play and structured activities.

**TIPS FOR SUCCESS**

- SET GOALS**  
Set realistic goals and make small, lasting changes to prime yourself for success.
- KEEP GOING**  
Once you reach these goals, don't stop. Gradually increase your activity and intensity to gain even more health benefits.
- WALK MORE**  
There are many ways to get active. You may find walking the easiest way to start.
- STAY ACTIVE**  
Not only can it help you feel, think, sleep and live better, staying active also improves overall quality of life. Every active minute counts toward your goal.
- ADD IT UP**  
Find ways to move more throughout your daily routine, whether it's at work, on your commute or at home. Every active minute counts toward your goal.
- MAKE A HABIT**  
Do something active every day or about the same time so it becomes a regular habit. Put it on your schedule so you're less likely to miss a day.

Learn more at [heart.org/lifes8](http://heart.org/lifes8)

## HOW TO MANAGE BLOOD SUGAR

**UNDERSTAND BLOOD GLUCOSE**  
The first step to managing your blood sugar is to understand what makes blood sugar levels rise.

**GLUCOSE INSULIN**  
The carbohydrates and sugars in what you eat and drink turn into glucose (sugar) in the stomach and digestive system. Glucose can then enter the bloodstream. Insulin is a hormone made in the pancreas that helps the body's cells take up glucose from blood and lower blood sugar levels.

**In Type 2 diabetes, glucose builds up in the blood instead of going into cells because:**  
The body develops "insulin resistance" and can't use the insulin it makes efficiently. The pancreas gradually loses its ability to produce insulin. The result can be a high blood glucose level.

**TRACK LEVELS**  
Health care professionals can take blood glucose readings and provide recommendations. If you're diagnosed with Type 2 diabetes, you will need to monitor your blood sugar level regularly. Visit [KnowDiabetesbyHeart.org](http://KnowDiabetesbyHeart.org) to learn how to manage your risk for heart disease and stroke if you have diabetes.

Fasting Blood Glucose	Diagnosis	What It Means
Lower than 100 mg/dL	Normal	Healthy range
100 to 125 mg/dL	Prediabetes (impaired fasting glucose)	At increased risk of developing diabetes.
126 mg/dL or higher	Diabetes Mellitus (Type 2 diabetes)	At increased risk of heart disease or stroke.

**TIPS FOR SUCCESS**

- EAT SMART**  
Eat a healthy diet of vegetables, fruits, whole grains, beans, legumes, nuts, plant-based proteins, lean animal proteins like fish and seafood. Limit sugary foods and drinks, red or processed meats, salty foods, refined carbohydrates and highly processed foods.
- MOVE MORE**  
Being physically active can lower your risk of developing diabetes and help you manage the disease if you already have it.
- MANAGE WEIGHT**  
Stay at a healthy weight to help prevent, delay or manage diabetes.
- NO NICOTINE**  
Smoking, vaping, exposure to secondhand smoke or using tobacco can increase your risk of heart disease, stroke, many cancers and other chronic diseases. It may also make prediabetes and diabetes harder to manage.

Learn more at [heart.org/lifes8](http://heart.org/lifes8)

## HOW TO MANAGE WEIGHT

**KEEP TRACK**  
Understanding how many calories you take in and your activity level can help you identify changes you want to make. To lose weight, you need to burn more calories than you eat.

**REDUCE CALORIES IN:**  
Keeping track of what and how much you're eating can help you know whether you're eating out of habit, stress or boredom instead of real hunger.

**INCREASE CALORIES OUT:**  
An activity tracker can help you gauge how much physical activity you get.

**LEARN YOUR BMI**  
Body Mass Index (BMI) is a numerical value of your weight in relation to your height. It can help you know whether you're at a healthy weight or need to lose weight. Optimal BMI is less than 25 but less than 18.5 is considered underweight. You can calculate your BMI online or see your health care professional.

**TIPS FOR SUCCESS**

- CONTROL PORTIONS**  
Learn about portion sizes and how much you might really be eating.
- GET ACTIVE**  
Sit less, move more and add intensity to burn more calories and improve your overall health.
- EAT SMART**  
Eat a healthy diet of vegetables, fruits, whole grains, beans, legumes, nuts, plant-based proteins, lean animal proteins like fish and seafood. Limit sugary foods and drinks, red or processed meats, salty foods, refined carbohydrates and highly processed foods.
- GET HELP**  
If you aren't able to lose weight successfully on your own, talk with your health care professional.

Learn more at [heart.org/lifes8](http://heart.org/lifes8)

## HOW TO CONTROL CHOLESTEROL

**UNDERSTAND CHOLESTEROL**  
Cholesterol is a fat-like substance that comes from two sources: **FOOD** and your **BODY**. It is found in foods from animal sources only. It travels in the body by lipoproteins (LDL and HDL).

**HDL = GOOD**  
High-density lipoprotein is known as "good" cholesterol.

**LDL = BAD**  
Low-density lipoprotein is known as "bad" cholesterol.

HDL helps keep LDL from sticking to artery walls and reduces plaque buildup. This process can lower the risk of heart disease and stroke. [heart.org/cholesterol](http://heart.org/cholesterol)

**TRIGLYCERIDES**  
The most common type of fat in the body.

**TOTAL CHOLESTEROL**  
HDL level + LDL level + 1/5th of triglyceride level = total cholesterol level.

**TRACK LEVELS**  
A health care professional can measure your blood cholesterol and help you understand what the levels mean in context of your overall heart health. Track your cholesterol levels over time and take steps to reduce high cholesterol.

**TIPS FOR SUCCESS**

- EAT SMART**  
Eat a healthy diet of vegetables, fruits, whole grains, beans, legumes, nuts, plant-based proteins, lean animal proteins like fish and seafood. Limit sugary foods and drinks, red or processed meats, salty foods, refined carbohydrates and highly processed foods.
- MOVE MORE**  
Physical activity helps improve cholesterol levels.
- KNOW YOUR FATS**  
The fats you eat can affect your cholesterol levels. Replace saturated fats with unsaturated fats.
- NO NICOTINE**  
Smoking lowers good HDL cholesterol. It also raises your risk of heart disease.
- TAKE MEDICATION AS DIRECTED**  
Your health care professional may prescribe statins or other medications to control your cholesterol levels.

Check your heart disease risk with the [Check.Change.Control.Calculator](http://Check.Change.Control.Calculator).  
Learn more at [heart.org/lifes8](http://heart.org/lifes8)

## HOW TO MANAGE BLOOD PRESSURE

**UNDERSTAND READINGS**  
Make smart choices and swaps to build an overall healthy eating style. Watch calories and eat smaller portions. Blood pressure is typically recorded as two numbers, written as a ratio like this:

**117 / 76**  
Read as "117 over 76" millimeters of mercury.

**SYSTOLIC**  
The top number, the higher of the two numbers, measures the pressure in the arteries when the heart beats (when the heart muscle contracts).

**DIASTOLIC**  
The bottom number, the lower of the two numbers, measures the pressure in the arteries when the heart is resting between heart beats.

BLOOD PRESSURE CATEGORY	SYSTOLIC MM HG (UPPER #)	DIASTOLIC MM HG (LOWER #)
Normal	Lower than 120	and Lower than 80
Elevated Blood Pressure	120-129	and 80
High Blood Pressure (Hypertension) Stage 1	130-139	or 80-89
High Blood Pressure (Hypertension) Stage 2	140 or higher	or 90 or higher
Hypertensive Crisis (Consult your doctor immediately)	Higher than 180	and/or Higher than 120

**TRACK LEVELS**  
A diagnosis of high blood pressure must be confirmed with a health care professional. Any unusually low blood pressure readings should also be evaluated. Health care professionals can take blood pressure readings and provide recommendations.

**TIPS FOR SUCCESS**

- EAT SMART**  
Eat a healthy diet of vegetables, fruits, whole grains, beans, legumes, nuts, plant-based proteins, lean animal proteins like fish and seafood. Limit sugary foods and drinks, red or processed meats, salty foods, refined carbohydrates and highly processed foods.
- MOVE MORE**  
Physical activity helps control blood pressure, weight and stress levels.
- MANAGE WEIGHT**  
If you're overweight, even a slight weight loss can reduce high blood pressure.
- NO NICOTINE**  
Every time you smoke, vape or use tobacco, the nicotine can cause a temporary increase in blood pressure.
- SLEEP WELL**  
Short sleep (less than 7 hours) and poor quality sleep are associated with high blood pressure.

Learn more at [heart.org/lifes8](http://heart.org/lifes8)

## Five fast heart facts

- 1) An adult heart is about the size of two hands clasped together.
  - 2) The heart pumps about 2,000 gallons of blood each day.
  - 3) The heart is in the middle of the chest, behind the breastbone.
  - 4) The heart's rhythm is controlled by the cardiac conduction system.
  - 5) The brainstem sends electrical signals to the heart to speed up during exercise and slow down during rest.
- SOURCE: Templehealth.org

**Insuring what you LOVE.**

Don't spend time worrying if you have the right insurance coverage. Visit with us today - we'll find you the perfect plan.

Health Insurance • Home Insurance  
Life Insurance • Car Insurance • More

**118 INSURANCE**  
Megan, Marla & Jeslynn

1-402-843-5741

118 South 2nd Street, Elgin, NE 68636

## HOW TO QUIT TOBACCO

**EDUCATE YOURSELF**  
The first step to quitting smoking, vaping and using tobacco is to understand the risks and health effects for you and your family.

- Within 1 year after quitting, your risk of heart disease goes down by half.
- Smoking is the most preventable cause of death in the U.S. It's linked to about one third of all deaths from heart disease and 90% of lung cancers.
- Smoking damages your circulatory system and increases your risk of multiple diseases.
- Cigarettes, e-cigarettes and tobacco products contain many toxic chemicals, as do their smoke, vapor and liquids.
- Tobacco use and nicotine addiction is a growing crisis for teens and young adults. You can be one of the millions of people who successfully quit every year.
- Vaping and secondhand smoke
- Roughly 40% of U.S. children ages 3-11 are exposed to secondhand smoke.

**MAKE A PLAN TO QUIT**  
You're more likely to quit tobacco for good if you prepare by creating a plan that fits your lifestyle.

**SET** a quit date within the next 7 days.

**CHOOSE** a method: cold turkey or gradually.

**DECIDE** if you need help from a health care professional, nicotine replacement or medicine.

**PREPARE** for your quit day by planning how to deal with cravings and urges

**QUIT** on your quit day.

Learn more at [heart.org/lifes8](http://heart.org/lifes8)

**TIPS FOR SUCCESS**

- DEAL WITH URGES**  
Whether physical or mental, learn your triggers and make a plan to address them. Avoid situations that make you want to smoke or use tobacco until you're confident that you can handle them.
- GET ACTIVE**  
Physical activity can help you manage the stress and cravings when quitting. You'll feel better, too.
- HANDLE STRESS**  
Learn other healthy ways to manage the stress of quitting.
- GET SUPPORT**  
A buddy system or support program can help you with some of the common struggles of quitting. 1-800-QUITNOW
- STICK WITH IT**  
Quitting tobacco takes a lot of willpower. Reward yourself when you reach milestones and forgive yourself if you take a step backward. Get back on course as soon as possible to stay on track and kick the habit for good.

## HOW TO GET HEALTHY SLEEP

Getting a good night's sleep every night is vital to cardiovascular health. Adults should aim for an average of 7-9 hours, and babies and kids need more depending on their age. Too little or too much sleep is associated with heart disease, studies show.

**LEARN HOW SLEEP AFFECTS YOUR HEALTH**  
Most adults need 7 to 9 hours of sleep each night. Babies and kids need even more. **Poor sleep may put you at higher risk for:**

- Cardiovascular disease
- Cognitive decline and dementia
- Depression
- High blood pressure, blood sugar and cholesterol
- Obesity

**LEARN THE BENEFITS OF SLEEP**

- HEALING** and repair of cells, tissues and blood vessels
- STRONGER** immune system
- IMPROVED** mood and energy
- BETTER BRAIN FUNCTION** including alertness, decision-making, focus, learning, memory, reasoning and problem-solving
- LESS RISK** of chronic disease

Learn more at [heart.org/lifes8](http://heart.org/lifes8)

**TIPS FOR SUCCESS**

- Clean up your sleep hygiene**
- MOVE IT.**  
Change your device as far away from your bed as possible. Added bonus? The distance may help you feel less overwhelmed in general.
- DIM IT.**  
Dim your screen or use a red filter app at night. The bright blue light of most devices can mess with your circadian rhythm and melatonin production.
- SET IT.**  
Alarms aren't just for waking up - set a bedtime alarm to remind you that it's time to wrap it up for the night.
- LOCK IT.**  
If you've got a scrolling habit you need to kick, try an app-blocking app that makes it impossible to get lost in after-hours emails, social media or gaming.
- BLOCK IT.**  
Tell notifications to buzz off if they're waking you up at night. Put your phone on "do not disturb" mode to block it all out when you're trying to sleep.

**We Are YOUR Hospital!**

**Antelope Memorial Hospital**

**WELLNESS ROOM** access, per month, is just:

**\$20** 54 and under

**\$17** 55 and over

\*Punchcard Options Available

**Hours Open: MON - FRI: 7:30 a.m.-4:00 p.m.**  
Watch for *extended* hours coming this spring.

**Equipment Available:**

- Ellipticals • Treadmills • NuSteps
- Airryne Bike • StairMaster
- Total Gym • Free Weights
- Cable Weight Machine
- TRX Body Weight Suspension

Phone **402.887.6204**  
email: [wellness@amhne.org](mailto:wellness@amhne.org)

**Gift Certificates Available**

The AMH Wellness/Physical Therapy Department consists of (l-r) - front row: Tyson Belitz, DPT; Corrie Reynolds, PTA; Amy Hamilton, PTA; and Ryan Gallagher, DPT, ATC; and back row: Bethany Schacht, office manager; Vanessa Carpenter, wellness coordinator/PT tech; Sarah Carlin, PT tech; and Angie Belitz, MPT.

For future events and classes available, please check [amhne.org](http://amhne.org)

## from heart.org/en/healthy-living/healthy-lifestyle/habits Making healthy habits stick

Every journey, including your own journey to better health and well-being, begins with just one step. Although getting and staying healthy can feel like a big challenge, it doesn't have to be. Working small, positive steps into your daily life can help you build a healthier life routine. But just putting them on your mental to-do list might not be enough. Tying those positive steps to other things you already do regularly — a practice called "habit stacking," or "habit chaining" — can help turn them into ironclad habits. For instance, you could take a daily habit, like brushing your teeth, and add in a little movement, like doing five squats. Here are a few other ideas.

You don't have to do the new habit at the same time as the current habit. You can add new habits before, during or after the original habit.

<b>DAILY HABIT</b> Taking a walk	<b>HEALTHY HABIT TO ADD</b> Focus mindfully on the sights and sounds of your walk (instead of daily stressors at work or home).
Writing a to-do list	Start by listing one or two things you are grateful for every day.
Making coffee/tea	Wash and slice up a vegetable for snacking while you wait for water to heat or tea to steep.

Find even more healthy living tips at [heart.org](http://heart.org)





One of a number of donations that Elgin Rescue received in 2024 for their new ambulance fund drive.



EMTs at last fall's joint Elgin Rescue/Elgin Volunteer Fire Department training session.

The Elgin Rescue members wish to

*Thank*

all who have donated to their ongoing

new ambulance and equipment fund drive. They are very close to meeting the set goal and the ambulance should be arriving soon, ready to serve the residents of Elgin and our surrounding rural area!



For each minute that defibrillation is delayed, the odds of surviving cardiac arrest are reduced by approximately **7-10%**.



*Thank You!*

members of Elgin Rescue for your dedication in serving our residents of Elgin during their times of greatest need.

**THESE ELGIN & ELGIN AREA BUSINESSES APPRECIATE ALL YOU DO FOR OUR COMMUNITY!**



Antelope Memorial Hospital/  
AMH Family Practice Clinics  
Bank of Elgin  
Beckman Lumber, Inc.  
Central Valley Ag  
Coffeehouse Café  
Dean's Market  
Elgin Hardware & More  
Draper Insurance Agency, Inc.  
Elgin Body & Glass  
Elgin Livestock Sales, Inc.

Elgin One Stop/Sleepin Inn  
Elgin Pharmacy & Gifts  
Elgin Review  
Elgin Veterans' Medical Clinic  
An Outpatient Department of  
Boone County Health Center  
Keith Hemmer, CPA, PC  
Heithoff Irrigation  
Hometown Station  
Invenergy  
Levander Funeral Home of Elgin

Insurance Mart  
Janet-Tracey-Tonya  
Jerry's Feed Service  
Jonny Dodge-Chrysler-Jeep  
Kittelson's Home Repair  
118 Insurance  
Martinsen Appraisals  
Precision Repair  
SAPP Bros. Petroleum, Inc.  
Starman Seed & Supply Inc  
TC Vet Clinic



**NOTICE OF MEETING**

**ANTELOPE COUNTY BOARD OF EQUALIZATION**

**NOTICE OF MEETING COUNTY BOARD OF COMMISSIONERS AS A COUNTY BOARD OF EQUALIZATION, ANTELOPE COUNTY, NEBRASKA**

Under section 77-202.02 to 77-202.03, the Antelope County Board of Equalization will meet on March 4th, 2025, at 9:15 AM in the County Commissioners Meeting Room, Antelope County Courthouse Annex, 501 M Street, Neligh, Nebraska, for the purpose of holding a hearing to determine the approval or disapproval of two (2) Tax Exemption Applications.

- 1) Clearwater Chamber of Commerce - Clearwater: 1.73 Acre irregular tract in the NE¼NW¼ Section 1, Township 25, Range 8, West of the 6th P.M., Antelope County, Nebraska
- 2) The Willows LLC: Lots 1-18,

Block 81 & vacated alleys, City of Neligh, Antelope County, Nebraska

The applications, descriptions of property, and recommendations of the Assessor are available in the Assessor's Office. All comments will be made to the County Board of Equalization.

As a Board of Equalization, actions such as approving tax roll corrections, motor vehicle exemptions and various other items which may become necessary to act upon. The meeting will be open to the public. An agenda is on file in the County Clerk's Office.

/s/ LISA PAYNE  
Antelope County Clerk  
/s/ KELLY MUELLER  
Antelope County Assessor  
PUBLISH: February 19, 2025  
ZNEZ

**ANTELOPE COUNTY BOARD OF COMMISSIONERS Neligh, Nebraska February 11th, 2025**

Chairman opened the meeting. Notice of meeting published as required by statute.

Approved agenda. Approved minutes of the January 14th, 2025, BOC & BOE Meeting. Public comments. Correspondence was reviewed.

Approved payroll. Approved vendor claims.

**General:** AMERITAS LIFE INS CORP ins 21,272.50; ANTELOPE CO COURT ex 86.00; APPEARA ex 34.22; APPLIED CONN TECH ex 12,589.91; BEAR GRAPHICS ex 438.75; BLACK HILLS ENERGY ut 2,091.16; BCBS ins 74,829.53; BOMGAARS ex 174.98; BROCKHAUS-HARLAN FUNERAL HOME ex 2,000.00; CARNEY LAW ex 3,811.00; CASEYS ex 103.84; CENTEC CAST METAL PRODS ex 900.52; CITY OF NELIGH ut 3,790.06; CITY OF NELIGH-RECYCLING ex 1,000.00; CLEARFLY ut 317.80; CLERK OF THE DIST

COURT ex 36.00; JUDITH COLE ps 10.00; COLONIAL LIFE & ACC INS ins 100.88; CORNHUSKER STATE INDUSTRIES ex 39.00; CUBBYS ex 109.33; DAS STATE ACCTG ex 1,095.35; DUSTYS ex 261.46; EAKES ex 544.36; ELGIN ONE STOP ex 50.93; ELGIN REVIEW ex 422.43; ELITE OFFICE PRODS ex 322.13; FED W/H tax 12,710.80; FIRST CONCORD BENEFITS ins 8,267.72; GREAT PLAINS COMM ut 324.77; SHERYLE GRIFFITH ex 98.00; DARRELL HAMILTON ps 11.00; HOLIDAY INN EXPRESS ex 624.75; HOLIDAY INN ex 10.00; MAKAYLA HUGHES ex 20.00; JACKS UNIFORMS & EQUIP ex 662.14; JONNY DODGE ex 347.34; KLEIN LAW OFFICE ex 807.50; HAROLD KLEIN ex 342.55; LIBERTY NATL ins 87.19; MADISON NATL LIFE ins 126.98; MICROFILM IMAGING SYSTEMS ex 122.00; DUANE MILLER ps 12.00; MIPS ex 10,545.39; NACO ex 30.00; NATL INS SVC ex 58.50; NEBR ASSN OF CO CLERK ex 50.00; NEBR ASSN OF CO TREAS ex 75.00; NEBR CHILD SUPPORT ex 643.00; NEBR DEPT OF REV tax 6,058.77; NEBR HEALTH & HUMAN SVCS ex 93.00; NELIGH POLICE DEPT ex 15.00; THOMAS NELSON ex 100.00; NIELSEN INS ex 35.00; VSP - NACO VISION ins 574.44; NCPPD ut 55.83; PAMELA SLAYMAKER ex 16.24; LISA PAYNE ex 157.79; PHYSICIANS LAB ex 2,150.00; PINNACLE BANK ex 927.57; PITNEY BOWES ex 398.38; PITZER DIGITAL ex 574.02; JANICE RIDDER ps 10.00; SANNE REPAIR ex 1,346.69; SCHROEDER LAND SURVEYING ex 155.00; CAROLINE SIEMS ps 25.00; WEX BANK ex 1,668.72; SOC SEC 28,039.08; STEALTH BROADBAND ut 1,137.68; THRIFTWAY MARKET ex 12.66; UNIV OF NEBR-LINCOLN ut 60.02; US CELL ex 644.49; WASH-

INGTON NATL INS ins 285.92; 319 GRAPHICS ex 261.25; NACO ex 380.00; ANTELOPE CO TREAS ex 150,000.00; Payroll: 141,246.43

**Road/Bridge:** AKRS ex 2,299.11; AMERITAS LIFE INS CORP ins 13,057.59; AMH ex 204.00; APPEARA ex 100.00; FIRSTNET ut 140.20; B'S ENT ex 2,075.00; BARCO ex 923.51; BLACK HILLS ENERGY ut 2,046.27; BCBS ins 49,740.70; BOMGAARS ex 2,116.72; BUTCH'S BODY SHOP ex 45.00; CARQUEST ex 1,390.12; CINTAS ex 8.16; CITY OF NELIGH ut 24.00; CITY OF TILDEN ut 71.43; COLONIAL LIFE & ACC INS ins 18.00; CONSTELLATION ex 615.24; CREDIT MGT SVCS garn 550.60; CUBBYS ex 503.75; DUSTYS ex 66.78; ELGIN ONE STOP ex 2.99; ERPPD ut 678.35; EMME SAND & GRAVEL ex 11,412.36; FARMERS PRIDE ex 8,158.25; FED W/H tax 8,402.38; FIRST CONCORD BENEFITS ins 2,748.91; FRONTIER COMM ut 538.05; GRAHAM TIRE ex 2,243.28; GREAT PLAINS COMM ut 312.75; GRUBB GRINDING ex 4,921.80; HOLIDAY INN EXPRESS ex 374.85; HUBEL WELDING & IRON ex 2,693.21; HUSKER VINYL ex 4,905.00; ISLAND SUPPLY WELDING ex 982.72; JEO CONSULTING GROUP ex 31,902.25; JONNY DODGE ex 7,155.08; KAYTON INTERNATL ex 10,833.04; KIMBALL-MIDWEST ex 35.76; LEIGH KLUTHE ex 4,905.00; LARGEN MFG ex 400.00; LAWSON PRODS ex 26.50; LAZY T TIRE ex 34.39; LIBERTY NATL ins 154.27; LICHTENBERG TIRE ex 1,116.25; MADISON NATL LIFE ins 56.97; MATTEO SAND & GRAVEL ex 2,813.58; MURPHY TRACTOR ex 72,500.00; NATL INS SVC ins 56.75; NEBR DEPT OF REV tax 3,921.14; NPPD ut 312.86; NELIGH AUTO & MACHINE ex 637.21; VSP - NACO VISION ins 343.91; NMC EXCHANGE ex 4,704.57; NCPPD ut 354.79; NORTHEAST GLASS ex 402.00; NNTC ut 65.68; ORCHARD LUMBER ex 173.46; QUALITY IRON & METAL ex 187.25; QUICK SERVE OIL ex 429.65; RAZOR TRACKING ex 975.00; RDO TRUCK CENTERS ex 1,949.74; ROYAL ONE STOP ex 480.91; SARGENT IRRIGATION ex 300.00; WEX BANK ex 692.33; SOC SEC 18,374.08; STEALTH BROADBAND ut 95.60; TRUCK CENTER OF NORFOLK ex 647.01; ULINE SHIPPING ex 398.08; VIL-

LAGE OF CLEARWATER ut 167.00; VILLAGE OF ORCHARD ut 82.80; WASHINGTON NATL INS ins 277.90; WESTERN OIL II ex 94.45; Payroll: 92,667.27

**County Visitor Promotion:** ORCHARD POWERLIFTING ex 350.00;

**Register of Deeds:** MIPS ex 349.80;

**Law Enforcement:** BLACK HILLS ENERGY ut 524.65; BOMGAARS ex 377.37; CARHART LUMBER ex 41.98; CASH-WA DISTR ex 4,596.44; CITY OF NELIGH ut 2,728.88; CULLIGAN ex 88.25; APRIL CURTISS ex 240.50; FAITH REGIONAL HEALTH SVCS ex 270.00; HILAND DAIRY ex 509.64; MIDWEST ALARM SVCS ex 345.50; PINNACLE BANK ex 89.10; SANNE REPAIR ex 12,156.58; THRIFTWAY MARKET ex 867.29; TRANE U S ex 15,288.00; U-SAVE PHARMACY ex 147.99;

**Commissary:** BOMGAARS ex 31.96; CASH-WA DISTR ex 592.74; KEEFE SUPPLY ex 460.08; PINNACLE BANK ex 896.30; THOMSON REUTERS - WEST ex 558.00; THRIFTWAY MARKET ex 102.46;

**Building:** VIRGINIA FILSINGER ex 1,200.00; HURTIG WELL SVC ex 208.12.

Purchased shouldering-master machine.

Heard Annual Extension Office Report.

Zoning Administrator report was heard. Approved administrative plat.

Discussion of establishing a driveway exit to the west of Law Enforcement Center.

Road Superintendent Report. Approved bid for bridge removal.

Authorized for R & B advertising for culverts, armor coating, gravel, hot mix, asphalt oil, cold mix.

Approved R & B to advertise for 6.5 miles of micro-surfacing. Leased bobcat from CAT.

Discussion of salary from project manager/road foreman.

Approved four (4) liquor license. Meeting Adjourned.

Antelope County Board of Commissioners  
CHARLIE HENERY  
Chairman of County Board

Attest: LISA PAYNE /s/  
Antelope County Clerk  
PUBLISH: February 19, 2025  
ZNEZ

**PROCEEDINGS FROM THE FEBRUARY 11, 2025 MEETING**

**THE ANTELOPE COUNTY BOARD OF COMMISSIONERS**

**Antelope Family Practice Clinics**

**Neligh Clinic: 402.887.5440**  
Early Morning Clinics (7:30 - 9 am) & Sat. Morning  
Dr. Troy Dawson, Dr. Roger Rudloff, Dr. Kelli Osborn, Dr. Josh Thoendel  
Ashley Niewohner, APRN, Angela Sucha, PA-C, Anita Murphy, PA-C

**Clearwater Clinic: 402.485.2277**  
Dr. Troy Dawson, Dr. Roger Rudloff, Dr. Josh Thoendel, Angela Sucha, PA-C

**Elgin Clinic: 402.843.5444**  
Dr. Troy Dawson, Dr. Roger Rudloff, Ashley Niewohner, APRN, Anita Murphy, PA-C

Call for an appointment  
**Antelope Memorial Hospital**  
Healing Body, Mind and Spirit  
amhne.org

**LEVANDER**  
FUNERAL HOME OF ELGIN

Hometown values, Small-town pricing, Caring service, Giving back to those who call on us.

Elgin's family-owned funeral home.  
Serving Elgin since 1892

Tony Levander, Dee Schalk and Drew Schaefer  
Funeral Directors

**402-843-5400**  
24 hours a day, 7 days a week  
www.levanderfuneralhome.com

**Community Calendar**

\* See ad/story in this week's Elgin Review

**Wednesday February 19**  
Girls State Wrestling Tournament in Omaha\*

**Thursday thru Saturday, February 20-22**  
Boys State Wrestling Tournament in Omaha\*

**Thursday, February 20**  
PICC No school (teacher in-service).

**Friday, February 21**  
State Dance Contest - No school (state wrestling tournament).

**Saturday, February 22**  
50th Wedding Anniversary for Bob and Lori Henn\*.

**Wednesday thru Friday, February 24-28**  
National FFA observed by Elgin FFA Chapter.

**Thursday, February 27**  
Application deadline for CNA course at Boone Central Health Center\*.

**Monday, March 3**  
NVC Speech meet at Wheeler Central High School - City Council meeting.

**ELGIN VETERANS' MEDICAL CLINIC**  
an outpatient department of Boone County Health Center  
116 N 2nd Street, Elgin  
**402.843.5910**

**FEBRUARY 11, 2025 PROCEEDINGS ANTELOPE COUNTY BOARD OF EQUALIZATION**

**Antelope County Board of Equalization Neligh, Nebraska February 11th, 2025**  
Chairman opened the meeting. Notice of meeting published as required by statute. Approved two (2) exemption applications.

Meeting Adjourned.  
Antelope County Board of Commissioners  
CHARLIE HENERY  
Chairman of County Board  
Attest: LISA PAYNE /s/  
Antelope County Clerk  
PUBLISH: February 19, 2025  
ZNEZ

**NOTICE TO BIDDERS - CULVERTS ANTELOPE COUNTY BOARD OF COMMISSIONERS**

**NOTICE FOR BIDS Culverts**  
The Antelope County Board of Commissioners will accept sealed bids until 9:15 AM on March 11th, 2025, for Culverts. Bids may be brought in or mailed to the Antelope County Clerk's Office, 501 M Street, PO Box 26, Neligh, NE 68756-0026. Specifications are available at the Clerk's Office. Bids made on items not listed on the specifications or bids not consistent with the specifications will not be accepted. All bids must be plainly marked "Culvert Bid" on the

lower left-hand corner of the envelope. Successful bidder will supply the specified product. Bids will be opened and publicly read at the March 11th, 2025, board meeting at 9:15 AM in the County Commissioners Meeting Room of the Antelope County Courthouse Annex. The Antelope County Board of Commissioners reserves the right to accept or reject any or all bids.  
Antelope County Board of Commissioners  
PUBLISH: February 19, 26 & March 5, 2025  
ZNEZ

**NOTICE OF DISSOLUTION GEF Partnership, L.L.C.**

**NOTICE OF DISSOLUTION**  
GEF Partnership, L.L.C., a Nebraska Limited Liability Company, with its registered address at 428 N. Elm, Box 193, Ewing, Nebraska 68735, was dissolved on February 7, 2025. The terms of the dissolution provide for the payment of liabilities of the Limited Liability Company and the distribution of any remaining assets to the members. Gary D. Funk, the President of the Limited Liability Company, is to manage the company affairs,

wind up and liquidate its business, and distribute its assets. The Limited Liability Company has no assets and no liabilities.  
Martin V. Klein  
Klein Law Office, P.C.  
101 W. 4th Street  
P.O. Box 166  
Neligh, NE 68756-0166  
(402)887-4190  
PUBLISH: February 19, 26 & March 5, 2025  
ZNEZ

**BORER CATTLE ANNUAL BULL SALE**  
Open House MARCH 2, 2025 12 PM-5 PM at the Ranch near Elgin, Nebraska  
Online Sale MARCH 1-3, 2025 Online Timed Event Sale at DV Auction.com

**DVAuction**  
Broadcasting Real-Time Auctions

Call for a catalog!  
KEITH AND AUDRA BORER  
(402) 843-8528  
Elgin, Nebraska  
keith.borer@hotmail.com

**BORER BIG EASY 4018 21035254**

CED	BW	WW	YW	MILK	MARB	RE	\$M	\$B	\$C
7	1.0	81	146	29	0.71	1.12	61	191	309

**Do you qualify for the Aged and Disabled Medicaid Waiver?**

**Family members and friends can now GET PAID caring for their loved ones!**

When you qualify for the A.D. Waiver, you're given the **Choice** of using our staff Caregiver or **your own** family member or friend to take care of you as a hired employee of Helping Hands. We do all the billing to Medicaid and **PAY** your Family or Friend Caregiver.

Home care services include:

- Meal Preparation
- Housekeeping
- Personal Care
- Transportation
- Shopping/errands
- Medication Reminders
- Doctors' Appointments

Helping Hands  
Stay At Home Care

Contact us today to see how we can help.  
**308.633.9200**

**SERVING ALL OF NEBRASKA! VA CLIENTS WELCOME**

Toys, Trains & Vintage Lunchbox  
**2 DAY SALE AUCTION**  
Friday February 28, 2025 & Saturday March 1, 2025  
Friday 250 Offline Items Only  
Saturday 400 Live Online Lots Through HiBid  
Friday, 5 P.M. Saturday, 9:30 A.M.

Vintage Metal Lunchboxes  
Vinyl Lunchboxes  
Thermoses  
Toys/Collectibles  
Plastic Lunchboxes  
Lionel Train Sets  
Toy Tractors/Implements/Equipment (Scales-1/16, 1/32, 1/64)

**TWO DAY AUCTION TOYS, TRAINS & VINTAGE LUNCHBOX EXTRAVAGANZA**

ASCHOFF AUCTION COMPANY  
Joe Aschoff  
5454 865 Rd.  
Omaha, NE 68175  
402-360-4435  
REAL ESTATE • FARM • HOUSEHOLD  
www.aschoffauction.com

**It Pays To Advertise!**

**EARN UP TO 5.12% APY\***

Boost your balance with Lifetime Checking.  
402-474-1400 | lincolnfed.com

**Lincoln Federal SAVINGS BANK**

\*Annual percentage yield (APY) effective on date of publication and subject to change without notice. \$50.00 minimum amount to open. Fees may reduce earnings. 5.12% APY for qualified customers only. Qualified customers must hold a balance between \$0.01 and \$5,000.00 and are subject to qualifying account activities. All of the following account activities must be met each statement cycle to qualify: have 16 points of sale debit card transactions post and settle to account, receive 6 statements, and log in to online banking. If account qualifications are met, balances from \$5,000.01 to \$100,000.00 will receive an APY of 1.65%, 5.12%, \$100,000.01 and above will receive an APY of 0.51%. 1.65% APY if qualifications are unmet the APY is 0.50%. Member FDIC.



**PUBLIC HEARING PROCEEDINGS**

**THE ELGIN CITY COUNCIL**

**ELGIN CITY COUNCIL Proceedings February 7, 2025**

The Elgin City Council met for a public hearing on Friday, February 7, 2025, at 7:00 p.m., pursuant to posted notice.

Mayor Schmitt called the meeting to order, and announced the location of the Open Meeting Act.

Councilmembers present were Craig Niewohner, Jim Kittelson, and Leigh Kluthe. Absent was John "Mike" Dvorak.

A complete and accurate copy of the minutes is available for public

inspection during normal business hours at the City Clerk's office.

The following agenda items were discussed:

- Public opinion on purchasing up to 15 acres of real estate for the tree dump located at the current tree dump site. No action was taken.

Public hearing adjourned at 7:10 p.m.

Mayor Mike Schmitt  
City Clerk Kristin L. Childers  
PUBLISH: February 19, 2025  
ZNEZ

**NOTICE OF DISSOLUTION**

**JG FUNK FARMS, LLC**

**NOTICE OF DISSOLUTION**

JG FUNK FARMS, LLC, a Nebraska Limited Liability Company, with its registered address at 52550 848 Road, Neligh, Nebraska 68756, was dissolved on January 28, 2025. The terms of the dissolution provide for the payment of liabilities of the Limited Liability Company and the distribution of any remaining assets to the members. Joseph R. Funk, the President of the Limited Liability Company, is

to manage the corporate affairs, wind up and liquidate its business, and distribute its assets. The Limited Liability Company has no assets and no liabilities.

Martin V. Klein  
Klein Law Office, P.C.  
101 W. 4th Street  
P.O. Box 166  
Neligh, NE 68756-0166  
(402)887-4190

PUBLISH: February 5, 12 & 19, 2025  
ZNEZ

**PROCEEDINGS OF THE FEBRUARY 7 MEETING**

**THE ELGIN CITY COUNCIL**

**ELGIN CITY COUNCIL Proceedings February 7, 2025**

The Elgin City Council met in special session on Friday, February 7, 2025, immediately following the conclusion of the public hearing, pursuant to posted notice.

Mayor Schmitt called the meeting to order, and announced the location of the Open Meeting Act.

Councilmembers present were Craig Niewohner, Leigh Kluthe, and Jeremy Young. Absent was John "Mike" Dvorak.

A complete and accurate copy of

the minutes is available for public inspection during normal business hours at the City Clerk's office.

The following agenda items were approved:

- Purchase up to 15 acres of real estate at \$2,500.00 per acre for the tree dump located at the current tree dump site

Special Meeting adjourned at 7:14 p.m.

Mayor Mike Schmitt  
City Clerk Kristin L. Childers  
PUBLISH: February 19, 2025  
ZNEZ

**NOTICE TO BIDDERS**

**CITY OF ELGIN**

**NOTICE TO BIDDERS**

The City of Elgin will be accepting bids for a 2009 8ft. Henderson 7xMILD salt spreader with a Briggs and Stratton 8HP engine. The item is believed to be operable and shall be sold in "as is" condition. Interested persons shall submit sealed bids, to the Office of the City Clerk, P.O. Box 240, 104 Pine Street, Elgin, NE 68636, so they are received in the Clerk's office no later than 3:00

p.m. on February 28, 2025. Bids shall be opened, and the property considered for sale at the regular meeting of the City Council on March 3, 2025, at 7:30 p.m. The City will consider all reasonable bids, but reserves the right to reject any or all bids.

PUBLISH: February 12, 19 & 26, 2025  
ZNEZ

# PUBLIC NOTICES

Stay in the know. Read the Public Notices

**PROCEEDINGS FROM THE FEBRUARY 10, 2025 MEETING**

**THE VILLAGE BOARD OF BARTLETT**

missed lead and copper test. There is no suspected issue with the water in town.

**SEWER:** Was discussed.

**KENO:** Was discussed.

**USER FEES:** Were discussed.

**MAY CLAIMS:** It was moved by Einspahr, seconded by Nordhues to pay all claims except those to Mark Nordhues for Professional fees of \$300 and the claim from Scott Plugge. Roll call vote: Yes—Plugge, Nordhues, Williamson, Tetschner and Einspahr. No: None. Absent: None. Abstained: None. Motion Carried. It was moved by Einspahr, seconded by Tetschner to pay Mark Nordhues and Scott Plugge's claims. Roll call vote: Yes—Williamson, Tetschner and Einspahr. No: None. Absent: None. Abstained: Nordhues and Plugge. Motion carried.

**GENERAL:** Internal Revenue Service, Payroll Taxes, \$79.80; Postmaster, 2 rolls of stamps, \$146.00; Tyler Schmitz, Customer deposit, \$61.35; Plugge's Rod Shop, Antifreeze, \$15.99; Rick Custard, Potholes, misc jobs, \$135.00; L & L Sanitation, Garbage pickup, \$1,742.00; Sherry Tetschner, Board Member Expense, \$50.00; Mark Nordhues, Board Member Expense, \$50.00; Kurt Einspahr, Board Member Expense, \$50.00; Scott Plugge, Board Member Expense, \$50.00; Dan Williamson, Board Member Expense, \$50.00; Emma Smith, Clerk Conference &

Hotel Room, \$261.52; Keys for Office, \$25.62; Salary, \$481.77

**TOTAL GENERAL EXPENSES:** \$3,199.05

**TOTAL KENO EXPENSES:** \$0.00

**SEWER:** Loup Valley RPPD, Utilities, \$58.73

**TOTAL SEWER EXPENSES:** \$58.73

**STREETS:** Peoples Service, Tire, \$395.00; Ken's Trailer Sales & Repair, Alignment, suspension enhancements—Ford 2008, \$1,723.00; Ken's Trailer Sales & Repair, Snow Plow for Ford 2008, \$10,350.00; Scott Plugge, Reimbursement of snow blade, \$1,158.72; Loup Valley RPPD, Utilities, \$1,107.21

**TOTAL STEET EXPENSES:** \$14,733.93

**WATER:** Loup Valley RPPD, Utilities, \$536.45; Wiese Waterworks, Opened hydrants, \$315.00; Central District Health Dept., Water Tests, \$78.00; NE Public Health Environmental Lab, Water Tests, \$278.50; Mark Nordhues, Professional Fee, \$300.00

**TOTAL WATER EXPENSES:** \$1,507.95

**GRAND TOTAL OF EXPENDITURES:** \$19,499.66

**OTHER BUSINESS:** Alexis Sprout presented a new grant opportunity for the splashpad as well as a new company's proposal for construction. The board decided to send the new proposal over to the lawyer for review. The board was

all in agreement to move forward with a new grant.

Drew Kasselder and members of the school board proposed the village applying for a planning grant for the hopeful new community center. This grant would only include the planning portion of the project. The town will not have to fund anything included in this grant. It was moved by Nordhues, seconded by Einspahr to approve applying for this planning grant. Roll call vote: Yes—Plugge, Nordhues, Williamson, Tetschner and Einspahr. No: None. Absent: None. Abstained: None. Motion Carried.

Dan Klüber discussed the school crosswalks with the board. They also discussed the need for no parking signs on Randolph street in front of people's houses. The village should be receiving those signs soon.

There will be another car show and cook off in town on May 31, 2025.

There being no other business, the meeting was adjourned at 8:02 p.m.

The next regular meeting will be Monday, March 10th, 2025, at 7:00 p.m.

Dated this 10th day of February 2025.

Emma Smith, Village Clerk  
PUBLISH: February 19, 2025  
ZNEZ

**PROCEEDINGS FROM THE FEBRUARY 12, 2025 MEETING**

**THE DISTRICT #18 BOARD OF EDUCATION**

President Welding led the "Pledge of Allegiance." Welding reminded everyone that a copy of the Nebraska Open Meetings Law was posted in the meeting room.

The school board meeting notice complied with the Meeting Notice Policy #204.07. Posting was done on the High School building window and post office bulletin board.

Eric Beckman motioned and Steve Busted second to approve the Consent Agenda: #4- Minutes of Previous Meeting, #5 - Adopt the Agenda, #6- Financial Report, #7 - Board Bills. Vote 5-0, motion carried.

A to Z Vac n Sew, 2610 431 000, \$129.90; Amazon, \$780.54; Appera, 2610 610 000, \$623.43; Applied Connective Technologies, 2510 530 000, \$156.00; Binswanger Glass, 2610 431 000, \$1,632.26; Bishop Business, 2510 490 000, \$138.83; Black Hills Energy, 2610 621 000, \$4,417.72; Bomgaars, 2610 610 000, \$1,104.58; Brockhaus, Mike, 2730 626 000, \$44.04; Chartwells, 1100 890 001, \$102.00; COR Therapeutic, 2140 320 000, \$1,525.00; Dana F Cole, 2510 315 000, \$475.00; Dean's Market, 2610 610 000, \$37.94, 1100 890 002, \$39.26; Eakes, 2610 610 000, \$1,346.70; ESU #8, \$97,238.30, \$80.00, \$45.50; Elgin Hardware, 2610 610 000, \$251.69; Elgin One Stop, 2710 626 000, \$1,414.92; Elgin Review, 2310 540 000, \$625.79, 2510 540 000, \$934.00; Elkhorn RPPD, 2610 621 000, \$2,681.28; Floor Maintenance & Supply, 2610 610 000, \$320.20; Graham Tire, 2730 431 000, \$858.00; Great America Financial Svcs, 2510 490 000, \$880.71; GO Physical Therapy, 6408/2161, \$2,164.75; Great Plains Communication, 2510 530 000, \$715.62; HP Inc., 6700 733 001, \$1,385.33; Hometown Station, 2710 626 000, \$496.86; Island Supply, 1100 610 001, \$109.12; IXL Learn-

ing, 1100 643 002, \$3,731.25; Jonny Dodge, 2730 431 000, \$1,377.66; Ken's Band Instrument Repair, 1100 810 000, \$74.00; KSB School Law, 2330 317 000, \$567.00; Mid-American Research Co., 2610 610 000, \$642.54; NASB, 2320 810 000, \$115.00, 2310 810 000, \$3,744.00; Northeast Regional Programs, 6408 16/17, \$46.50; Olson's Pest Technicians, 2610 890 000, \$105.00; OneSource, 2510 890 000, \$38.50; Overland Rehab, 6408 320 000, \$461.55; Pitzer Digital, 2310 540 000, \$288.00; Sands Truck Service, 2730 431 000, \$745.56; TMS, 2580 351 000, \$67.98; Truck Center, 2730 431 000, \$6,110.70; US Bank, \$1,392.66; Verizon Business, 2510 530 000, \$97.84; Verizon Wireless, 2510 530 000, \$22.23; WageWorks, 1100 291 000, \$139.25; Wild Roots, 1100 610 001, \$415.51; Wells Fargo, \$7,784.90; Y&Y Lawn Service, 2630 431 000, \$5,519.50  
Total Board Bills: \$156,242.40  
Payroll: \$261,514.15  
Total Board Bills/ Payroll: \$417,756.55

President Welding recognized visitors and asked if the patrons had any comments.

In the Committee reports, there were no changes to the committee's assignments. There were no reports from standing committees.

In the principal's report, Principal Wemhoff reported on previous activities and the upcoming activities.

Supt. Brockhaus reported that a new section of mirror for the weight room will be placed, needs to be replaced per ALICAP. Mr. Brockhaus mentioned another summer project will be replacing the locker room ceiling tiles with waterproof ceiling tiles. Also reported on the principal evaluation.

In action items, Eric Beckman motioned to approve the transfer of funds of \$350,000 from the General Operating Fund to an in-

terest-bearing account at Great Plains State Bank, seconded by Ron Bode. Vote 4-0, Heithoff abstained, motion carried.

Heithoff motioned; Busted seconded to approve the offering of teacher contracts for 2025-2026 school year. Vote 5-0, motion carried.

Busted motioned, Bode seconded to approve the teaching contract for Mr. Brian McGill for Junior High Math. Vote 5-0, motion carried.

Bode motioned to approve the 2025-2026 school calendar. Beckman seconded. Vote 5-0, motion carried.

Bode motioned to approve the bid from Mike Schmitt for \$15,488 to replace the 4th grade and 5th grade classroom windows along with the panels above. Beckman seconded the motion. Vote 5-0, motion carried.

Heithoff motioned, Beckman seconded to approve the addition of MTSS and Esports Positions on the Extra Duty Salary Schedule, starting the school year of 2025-2026. Vote 5-0, motion carried.

Heithoff motioned to approve the bid for carpeting of the new Spanish (old teachers' lounge room) from Leifelds for \$2,686.44 and approve the bid for a 15' x 9' heavy duty rug with EPS logo on from Urbanec's for \$1519.00 for the production room. Busted seconded. Vote 5-0, motion carried.

Bode made a motion to approve the first reading of updated Policy 504.02R1 Elgin Public School Testing and Honor Awards. Seconded by Heithoff. Vote 5-0, motion carried.

In discussion items, the Americanism Hearing will be at 7:00 p.m. on March 12th, before the regular March Meeting. Discussion was also held on the updating of the Northwest Elementary building lights.

Motion by Busted and second by Beckman to adjourn the meeting. Vote 5-0, motion carried. The meeting adjourned at 7:39 p.m. The next meeting will be held on March 12, 2025, at 7:30 p.m. in the EPS Board room.

Respectfully submitted,  
Ron Bode, Secretary  
Jessica Niewohner, Recorder  
-This is a draft copy and does not become official Elgin Public Board minutes until approved at the next regular or advertised meeting.  
PUBLISH: February 19, 2025  
ZNEZ

**ELGIN PUBLIC SCHOOL BOARD**

**Regular Meeting**

**EPS Distance Learning Room February 12, 2025, 6:30 PM**

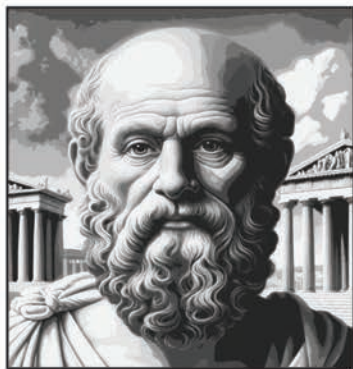
President Lisa Welding called the regular February Meeting to order at 6:30 p.m. The board members present were Eric Beckman, Ron Bode, Steve Busted, Todd Heithoff and Lisa Welding. Also present were Superintendent Mike Brockhaus and Principal Greg Wemhoff. Luke Hinkle was absent.

Todd Heithoff motioned, and Ron Bode seconded to excuse Luke Hinkle from the meeting. Vote 5-0, motion carried.

A very wise man, Socrates, once said

**"YOU DON'T KNOW WHAT YOU DON'T KNOW"**

this guy!



If your local newspaper didn't publish public notices and write stories about past and upcoming public meetings, you would be left guessing at what your government entities are doing. New service rates, purchases and sellings of property, ordinances and so much more.

Governments are larger, more pervasive and way, way more powerful now than in any time in America's history.

Public notices are MANDATORY announcements of what these governmental bodies plan to do or what they have already set into motion. Therefore, they aren't very popular with governmental officials.

Since we know these notices are critical to keeping the public informed, you can find our legals in 3 places... our print/digital edition, on our website [elginreview.com](http://elginreview.com) and in a statewide data base.

**nepublicnotices.com**

Provided to the public by members of the Nebraska Press Association.

**GUESS WHAT? NO MORE EXCUSES.**

SERVING ANTELOPE, BOONE, and WHEELER COUNTIES, NEBRASKA SINCE 1883

**The Elgin Review**

## What's Next?

Are you or someone you love a person with a disability facing life after high school, but don't know where to turn for needed services to help you reach your goals?

The League of Human Dignity is skilled at helping young people with disabilities make the transition into post-secondary life, whether that means further education, the workforce, or independent living. Contact us to see if we can help.



Phone 833-800-5643

KEEP YOUR SMILE BRIGHT!

**ALBION + DENTAL**

— CLINIC —

Katherine A. Kusek, DDS, PC

305 W. Church St. Albion, NE  
402-395-2211 | [www.albiondentale.com](http://www.albiondentale.com)



### NOTICE OF ORGANIZATION

KLK REAL ESTATE L.L.C.

#### NOTICE OF ORGANIZATION

The name of the limited liability company: KLK REAL ESTATE, L.L.C. The address of the designated office is: 52789 854 Road, Neligh, Nebraska 68756. The name

and mailing address of the initial agent for service of process of the company is Martin V. Klein, 101 W. 4th Street, P.O. Box 166, Neligh, NE 68756. It is organized to transact any lawful acts concerning any

and all lawful business, other than banking or insurance, for which a limited liability company may be organized under the laws of the State of Nebraska. This company commenced upon

filing the Certificate of Organization with the Secretary of State on February 5, 2025, and its existence shall be perpetual. The affairs of the limited liability company are to be conducted by the members un-

der an operation agreement duly approved by its members.  
KLK REAL ESTATE, L.L.C.  
Martin V. Klein  
Klein Law Office, P.C.

P.O. Box 166  
Neligh, NE 68756-0166  
(402)887-4190  
PUBLISH: February 12, 19 & 26  
ZNEZ

# DELINQUENT TAX LIST

Notice is hereby given that in compliance with the revenue laws of the State of Nebraska, all land and town lots in the County of Antelope, State of Nebraska, on which taxes remain unpaid, a list of which is hereto annexed, will be offered for sale at public auction at the County Treasurer's office in Neligh, Nebraska, on the first Monday in March 2025, starting at 9 a.m. of said day, for payment of taxes, interest and costs thereon. Taxes are delinquent for the year of 2023 and prior years. Purchasers must notify property owners by personal service and may collect an administrative fee of \$100 or more from the property owner for the cost of service upon redemption.

Deb Branstiter  
Antelope County Treasurer

SEQ #	DISTRICT	PARCEL	MULTIYEAR	NAME	PROPERTY ADDRESS	LEGAL	TOTAL DUE
1	1	0000003000		HOEFER, TRENT & HANNAH	309 M ST NELIGH NE 68756	LOT 17 BLK 3 NELIGH CITY	600.42
2	1	0000004600		LEGATE, BRIAN K & TERESA A	405 M ST NELIGH NE 68756	LOT 15 EX S 1.1' OF W 72' BLK 4 NELIGH CITY	566.26
3	1	0000005200		LEGATE, BRIAN K & TERESA A	417 M ST NELIGH NE 68756	LOT 20 BLK 4 NELIGH CITY	488.64
4	1	0000011600		HOEFER, ROBERT P	506 M ST NELIGH NE 68756	LOTS 7-8 & E2 VAC ALLEY BLK 18 NELIGH CITY	493.82
5	1	0000012800		BLOOD PHARMACY LLC	414 M ST NELIGH NE 68756	LOT 6 BLK 19 NELIGH CITY	62.06
6	1	0000012900		BLOOD PHARMACY LLC	412 M ST NELIGH NE 68756	LOT 7 BLK 19 NELIGH CITY	62.06
7	1	0000013000		BLOOD PHARMACY LLC	410 M ST NELIGH NE 68756	LOT 8 BLK 19 NELIGH CITY	996.66
8	1	0000013100		LEGATE, BRIAN & TERESA	408 M ST NELIGH NE 68756	LOT 9 BLK 19 NELIGH CITY	928.92
9	1	0000013300		DENNIS, DOUGLAS A & GLORIA A	402 MAIN ST NELIGH NE 68756	LOT 12 BLK 19 NELIGH CITY	234.87
10	1	0000019600		LEGATE, BRIAN K & TERESA A	609 O ST NELIGH NE 68756	LOT 10 BLK 28 NELIGH CITY	111.6
11	1	0000019700		LEGATE, BRIAN K & TERESA A	611 O ST NELIGH NE 68756	LOTS 11-12 BLK 28 NELIGH CITY	577.02
12	1	0000025600		PARRA, JENNIE	307 W 8TH ST NELIGH NE 68756	LOTS 7-8 BLK 38 NELIGH CITY	1,298.14
13	1	0000027700		TAYLOR, SHANE	506 O ST NELIGH NE 68756	LOT 4 BLK 40 NELIGH CITY	359.14
14	1	0000028401		BRANDT, WILLIAM B	412 O ST NELIGH NE 68756	LOT 1 & N2 LOT 2 EX W 40' OF BOTH BLK 41 NELIGH CITY	390.86
15	1	0000030100		WOODARD, SARAH	606 P ST NELIGH NE 68756	LOT 4 N2 LOT 5 BLK 50 NELIGH CITY	557.84
16	1	0000031800		MCMILLAN, JEANNA	408 W 8TH ST NELIGH NE 68756	LOTS 8-12 BLK 52 NELIGH CITY	252.74
17	1	0000032800		PARKER, KATHY	911 Q ST NELIGH NE 68756	LOTS 11-12 BLK 53 NELIGH CITY	1,044.72
18	1	0000034901	***	LIERMAN, DARRYL & JULIE		S 10' LOT 9 & S 10' OF W2 ADJ VAC ALLEY NELIGH CITY	32.66
19	1	0000036300		MICKELSON, SUSAN L	508 W 7TH ST NELIGH NE 68756	E 52' OF W 124' LOTS 13-15 BLK 60 NELIGH CITY	519.76
20	1	0000037700		HOEFER, ROBERT P	600 R ST NELIGH NE 68756	LOTS 7-9 EX RR ROW BLK 72 NELIGH CITY	229.34
21	1	0000040300	***	HINES, RICKEY & DEBBIE	1004 R ST NELIGH NE 68756	LOTS 5-6 E 66' LOTS 7-8 E 66' S 28' LOT 9 & VAC ALLEY BLK 76 NELIGH CITY	1,105.82
22	1	0000047000		DENNIS, DOUGLAS & GLORIA	701 L ST NELIGH NE 68756	LOTS 13-18 BLK 126 NELIGH CITY	966.71
23	1	0000047900		CAROTHERS, THOMAS B	202 E 6TH ST NELIGH NE 68756	W 72' LOTS 7-10; S 6' OF W 72' LOT 11 BLK 127 NELIGH CITY	571.26
24	1	0000068200	***	STUTMAN, ERIC W & KATHARINE	608 E 6TH ST NELIGH NE 68756	E 54' LOTS 7-9; S 12' OF E 54' LOT 10 & VAC ALLEY ADJ BLK 171 NELIGH CITY	3,511.40
25	1	0000072300		MURRAY, TRISHA L	705 E 2ND ST NELIGH NE 68756	W2 LOTS 1-2 BLK 177 NELIGH CITY	1,018.10
26	1	0000079601		BRADY, JIM A & PATRICIA A	1211 Q ST NELIGH NE 68756	DAXONS SUB TR 180' X 162' LOT E NELIGH CITY	1,770.68
27	1	0000086200		ZUBARAN, ALMA ROSA MURRUFO	105 D ST APT 3 NELIGH NE 68756	ROCHE & ANDER E 40' LOT 3; LOTS 4-5; W 24' EX E 6' OF S 91' LOT 6 BLK K 31 (UNITC) NELIGH CITY	1,283.16
28	1	0000095100		LIERMAN, DARRYL & JULIE	00000 W 6TH ST NELIGH NE 68756	FORMER RR ROW 20-25-6 LOT 18 EX STR FOR CITY RD NELIGH CITY	148.1
29	2	0000104000		DLMT PROPERTIES LLC	00000 ANTELOPE ST & HWY 2 TILDEN NE 6875	LOT 4 EX HWY BLK 22 TILDEN CITY	46.36
30	2	0000106400	***	SCHOLL, TAMRA J	313 PINE ST TILDEN NE 68781	S 35' OF S 80' OF W2 LOT 1 N 25' OF THE W 150' LOT 2 BLK 35 TILDEN CITY	1,135.70
31	3	0000117000		STAN WILKINSON FARMS INC	00000 HWY 275 OAKDALE NE 68761	THAT PART OUTSIDE ST GDS BLK 1 EX .422 AC FOR ST HWY OAKDALE VILLAGE	16.18
32	3	0000121200		KALLHOFF, VINCENT L & NIKKI L	401 3RD ST OAKDALE NE 68761	LOTS 9-15 BLK 18 OAKDALE VILLAGE	385.7
33	3	0000123500	***	BARRINGTON, STEPHAN ALLEN & FRANCIS JEAN	708 5TH ST OAKDALE NE 68761	LOTS 1-2 BLK 26 OAKDALE VILLAGE	2,364.74
34	3	0000123800		CARR, KENNETH C & NONA Z	403 GRANT ST OAKDALE NE 68761	LOT 6 BLK 26 OAKDALE VILLAGE	56.14
35	3	0000124000	***	BISHOP, SANDI JO & JOHN A	408 GRANT ST OAKDALE NE 68761	LOTS 1-2 BLK 27 OAKDALE VILLAGE	2,311.34
36	3	0000124100	***	CHRISTENSEN, LINDA ROSEANNE	404 GRANT ST OAKDALE NE 68761	LOT 3 BLK 27 OAKDALE VILLAGE	930.44
37	3	0000124600		SEE TRU ART & DESIGN LLC	506 5TH ST OAKDALE NE 68761	WEST 26' LOTS 1-2 BLK 28 OAKDALE VILLAGE	63.08
38	3	0000124700		SCHULTZ, JOHN H JR	404 JENKS ST OAKDALE NE 68761	E 100' LOT 2 BLK 28 OAKDALE VILLAGE	74.22
39	3	0000125600		SHORT, JOHN R	401 HOHMAN ST OAKDALE NE 68761	LOTS 9-11 BLK 29 OAKDALE VILLAGE	322.2
40	3	0000128500	***	DECAMP LEGAL SERVICES PC	203 5TH ST OAKDALE NE 68761	LOTS 6-10 BLK 33 1/2 OAKDALE VILLAGE	452.74
41	3	0000129100		FULSAAS, DELAYNE & ANGELA	307 5TH ST OAKDALE NE 68761	W 2' LOT 3; LOTS 4-5; E 7' LOT 6 BLK 34 OAKDALE VILLAGE	99.26
42	3	0000129400		MORRISON, RAY	304 6TH ST OAKDALE NE 68761	LOTS 13-18 BLK 34 OAKDALE VILLAGE	251.15
43	3	0000129800		WORLEY, KIMBERLY J	508 WALTHER ST OAKDALE NE 68761	LOTS 1-2 BLK 35 OAKDALE VILLAGE	605.58
44	3	0000131000		SCHULTZ, JOHN H JR & JANE M	00000 HOHMAN ST OAKDALE NE 68761	LOTS 13-17 BLK 35 OAKDALE VILLAGE	27.94
45	3	0000131800	***	LEE, VINCENT JOHN	704 6TH ST OAKDALE NE 68761	LOTS 7-8 BLK 37 OAKDALE VILLAGE	144.58
46	3	0000132100		KALLHOFF, MICHAEL A & FRANCES D	505 GREELY ST OAKDALE NE 68761	N2 LOT 1 LOTS 3-4 & PT VAC STS & ALLEYS BTW BLK 39 OAKDALE VILLAGE	357.3
47	3	0000132300		KALLHOFF, MICHAEL A & FRANCES D	505 GREELY ST OAKDALE NE 68761	LOTS 2-4 & PT VAC STS & ALLEYS BTW BLK 40 OAKDALE VILLAGE	511.95
48	3	0000132600		DEWEY, MICHAEL & REBECCA ETAL	00000 WILSON ST OAKDALE NE 68761	LOTS 1-4 BLK 42 OAKDALE VILLAGE	67.24
49	3	0000134400		SHORT, MAVERICK	601 HOHMAN ST OAKDALE NE 68761	LOTS 9-14 BLK 45 OAKDALE VILLAGE	263.26
50	3	0000134500		SCHULTZ, JANE M ETAL	605 HOHMAN ST OAKDALE NE 68761	LOTS 15-17 BLK 45 OAKDALE VILLAGE	429.66
51	3	0000134600		SCHULTZ, JANE M ETAL	605 HOHMAN ST OAKDALE NE 68761	LOTS 18-20 BLK 45 OAKDALE VILLAGE	16.84
52	3	0000134900	***	JACOBS, JAMES & KAREN	601 TAYLOR ST OAKDALE NE 68761	LOTS 13-16 BLK 46 OAKDALE VILLAGE	654.33
53	3	0000135900	***	SPANGLER, SEAN M	600 RATH ST OAKDALE NE 68761	LOTS 3-4 BLK 48 OAKDALE VILLAGE	546.22
54	3	0000136800	***	STINES, FRED & CANDICE	702 WILSON ST OAKDALE NE 68761	BOYD'S ADD E2 BLK 3 OAKDALE VILLAGE	143.9
55	3	0000137300		WILKINSON, MATT & KELLI	601 LAWTON AVE OAKDALE NE 68761	BOYD'S ADD W 82' W2 BLK 4 OAKDALE VILLAGE	497.46
56	3	0000139100	***	HAWKINS, JAMES & DEBBIE	700 TAYLOR ST OAKDALE NE 68761	MC GEE'S SURVEY NE4SE4 11-24-6 N 84' LOT 5 OAKDALE VILLAGE	481.54
57	3	0000139300		KISTNER, GEORGETTE ETAL	806 TAYLOR ST OAKDALE NE 68761	MC GEE'S SURVEY S 497' EX 1/2 AC OFF E END OF S 197' LOT 15 OAKDALE VILLAGE	272.26
58	3	0000139500		FULSAAS, DELAYNE & ANGELA	800 TAYLOR ST OAKDALE NE 68761	MC GEE'S SURVEY OF NE4SE4 11-24-6 S2 LOT 4; LOTS 11-12; LOT 14 EX TRI TR 132'X330'; N 163' LOT 15 OAKDALE VILLAGE	1,350.38
59	3	0000139700		FULSAAS, DELAYNE & ANGELA		SEMINARY ADD LOTS 1-13 & ALL VAC STS & ALLEYS OAKDALE VILLAGE	177.04
60	3	0000142200		STAN WILKINSON FARMS INC	00000 2ND ST OAKDALE NE 68761	VAC/MISC TRS E2 BLK V OAKDALE VILLAGE	70.38
61	3	0000142600		WILKINSON, MATTHEW	00000 HWY 275 OAKDALE NE 68761	IR TR E2 & 1/2 VAC ST ADJ EX HWY BLK VIII OAKDALE VILLAGE	153.82
62	3	0000145001		NOVOTNY, ASHLEY A	411 LAWTON AVE OAKDALE NE 68761	TAX LOT 2 EX W 65' & EX E 89.25' OAKDALE VILLAGE	297.62
63	4	0000165600		ESAU, DUANE E & JANICE K	103 NORTH ST ELGIN NE 68636	E2 LOT 2 LOT 3 BLK 18 ELGIN CITY	941.02
64	4	0000167900		KOLM, DAVID L	410 N 4TH ST ELGIN NE 68636	LOT 6-7 BLK 20 ELGIN CITY	1,497.46
65	4	0000192400		SMITH, TONY L	404 S 2ND ST ELGIN NE 68636	S 118' OF N 122.5' TAX LOT 2 ELGIN CITY	942.62
66	5	0000202600		BARRON, ELIZABETH L	302 W 3RD ST BRUNSWICK ME 68720	E2 LOTS 13-18 BLK 7 BRUNSWICK VILLAGE	706.16
67	5	0000202900		KESTER, PATRICK J & TAMMY J ETAL	204 TRACY ST BRUNSWICK ME 68720	N 10' LOT 22; LOTS 23-24 BLK 7 BRUNSWICK VILLAGE	375.16
68	5	0000204200		FORBES, WARREN & JULIE	206 FRANKLIN ST BRUNSWICK NE 68720	LOTS 19-22 BLK 9 BRUNSWICK VILLAGE	54.22
69	5	0000207800		FORBES, WARREN D	300 FRANKLIN ST BRUNSWICK NE 68720	LOTS 1-4 BLK 16 BRUNSWICK VILLAGE	289.26
70	6	0000215600		PETTIJOHN, JAY	203 FREMONT ST ROYAL NE 68773	LOTS 7-12 BLK 2 ROYAL VILLAGE	92.52
71	6	0000219800		RUNDQUIST, NOLAN G	00000 4TH ST ROYAL NE 68773	W 25' OF E 50' LOTS 9-12 BLK 9 ROYAL VILLAGE	3.86
72	6	0000224000		PETTIJOHN, DALE E & MARY ANN	2035 E HWY 20 ROYAL NE 68773	3-27-7 NORTH 80 ADD TR 150' X 499' ROYAL VILLAGE	597.54
73	7	0000233100		TREASE, JENNIFER L		LOTS 3-4 BLK 10 ORCHARD VILLAGE	99.56
74	7	0000235300		TABBERT, KRISTINE	440 WINDOM ST ORCHARD NE 68764	DRAYTON'S SUB LOTS 4-6 ORCHARD VILLAGE	314.34
75	7	0000235500		CLEVELAND, KIRK & KENDRA THARP	420 WINDOM ST ORCHARD NE 68764	DRAYTON'S SUB LOTS 11-14 ORCHARD VILLAGE	1,667.22
76	7	0000236400		TABBERT, KRISTINE A		HOWARTH'S ADD N 354' OUTLOT B & E2 VAC RELF ST 1.07 AC ORCHARD VILLAGE	111.3
77	7	0000238200		WICKERSHAM, JAMES L	325 W 4TH ST ORCHARD NE 68764	HOWARTH'S ADD LOTS 17-18 BLK 3 ORCHARD VILLAGE	23.92
78	7	0000238400		TABBERT, KRISTINE	430 RELF AVE ORCHARD NE 68764	RELF'S SUB TR 80' X 144' LOT 2 ORCHARD VILLAGE	242.62
79	7	0000241901		WICKERSHAM, JAMES L	302 W 4TH ST ORCHARD NE 68764	ALEXANDER'S SUB LOTS 1-2 BLK 1 ORCHARD VILLAGE	23.92
80	7	0000242000		WICKERSHAM, JAMES L	310 W 4TH ST ORCHARD NE 68764	ALEXANDER'S SUB LOTS 3-6 BLK 1 ORCHARD VILLAGE	496.4
81	7	0000242100		WICKERSHAM, JAMES L	330 4TH ST ORCHARD NE 68764	ALEXANDER'S SUB LOTS 7-9 BLK 1 ORCHARD VILLAGE	256.18
82	7	0000243200		AMERICAN DAIRY FOOD & CONSULT LABS		TIEDE'S SUB LOTS 7-12; LOTS 13-22 EX TR 25' X 50' IN LOT 18; N2 VAC ALLEY ADJ TO LOTS 10-12; VAC ALLEY IN S2; 1/2 VAC ST ADJ ORCHARD VILLAGE	7,289.68
83	7	0000243400		AMERICAN DAIRY FOOD & CONSULT LABS		TIEDE'S SUB LOTS 1-2 EX N 75'; 1/2 VAC ST ADJ BLK 2 ORCHARD VILLAGE	46.58
84	7	0000247500		SHAFFER, TRAVIS & ASHLEY	530 E 4TH ST ORCHARD NE 68764	LUCY GALLUP'S ADD N2 LOT 3; E 45' OF N2 LOT 4 BLK A ORCHARD VILLAGE	1,874.10
85	7	0000255100		MILLER, NEIL D	400 E 2ND ST ORCHARD NE 68764	TAX LOTS N2NW4 10-27-8 TAX LOT 8 N 171' TAX LOT 9 ORCHARD VILLAGE	388.62
86	8	0000260600		AUTOMATED DAIRY SPECIALISTS LLC	610 MAIN ST CLEARWATER NE 68726	LOTS 10-14 BLK 4 CLEARWATER VILLAGE	546.1
87	8	0000262200		ARROYO, ROBERTO & ESTHER	506 NEVADA ST CLEARWATER NE 68726	LOT 10 S 30' LOT 11 BLK 6 CLEARWATER VILLAGE	313.08
88	8	0000274000		JACOB, JASON R	417 RIVER RD CLEARWATER NE 68726	OUTLOTS TR IN OUTLOT O EX TR TO STATE OF NE CLEARWATER VILLAGE	907.46
89	8	0000274100		JACOB, JASON R	00000 HWY 275 CLEARWATER NE 68726	OUTLOTS PART OF OUTLOT O & OUTLOT P CLEARWATER VILLAGE	129.06
90	8	0000275500		KRUGER, AARON	502 NEBRASKA ST CLEARWATER NE 68726	MITCHELL'S SUB LOT 1 CLEARWATER VILLAGE	558.3
91	34	0000857400		NEW CINGULAR WIRELESS PCS LLC	52999 846 RD TILDEN NE 68781	32-25-5 SE4 (IOLL CELL TOWER) ELM TWSP	49.92
92	66	0000384400		WOOD, ELIZABETH ELLEN	86049 533 AVE PLAINVIEW NE 68769	23-27-5 TR NE4SE4 12 AC CRAWFORD TWSP	217.16
93	66	0000856300					



# Wolfpack Sports



E-R photo/DMorgan

Kayton Zwingman (1) scored 13 points to help lead the Wolfpack to a 60 to 32 victory over the CWC girls last week.

## EPPJ gals post second win over CWC Renegades

BARTLETT — It may have been a cold February night, but the Wolfpack were 'hot' inside the gymnasium, defeating the Lady Renegades 60 to 32 Tuesday night.

Playing the first of two games to wrap up the regular season, EPPJ did not disappoint their faithful followers, nearly doubling the score on CWC.

A fast start, at both ends of the court, allowed the Wolfpack to never trail in a game between neighboring schools.

For more than seven minutes in the opening quarter, EPPJ's defensive pressure, a constant during this winning season, held CWC scoreless. With 40 seconds left in the quarter,

CWC's Ella Moses got her team on the board by making one of two free throws. That made the score 19 to one.

Before Moses' free throw, EPPJ had their way at the other end of the court. Kayton Zwingman and Braelyn Martinsen each had five points. Teammates Kate Furstenau and Callie Heithoff made treys. Heithoff's basket closed out the first quarter with the Wolfpack ahead 22 to 3.

To their credit, CWC played better over the final three quarters as Moses & Co. begin to find the basket.

EPPJ got 14 points in the

See EPPJ, Page 15 ▶

## Wolfpack rout Lady Cards 58 to 18

RANDOLPH — It was a mismatch. The Wolfpack girls basketball team wrapped up the regular season Thursday night on the road at Randolph. And what a wrap-up it was. EPPJ jumped out to a 23 to 0 lead after one quarter and went on to defeat the Cardinals 58 to 18.

The game was a battle of two teams going in different directions. The Cardinals are in rebuilding mode, having no seniors on the squad, having yet to taste victory this season. The Wolfpack, having another winning season under Coach Randy Eisenhauer, are now xx-x heading into postseason play. The Wolfpack led 33 to 0 in

the second quarter before the Cardinals scored.

EPPJ's defense again turned in impressive numbers. They limited the Cardinals to just six points in each of the final three quarters. They forced 42 turnovers and recorded 31 steals. At one time in the game, EPPJ led Randolph by 42 points.

The Wolfpack trio of Braelyn Martinsen, Kate Furstenau and Mady Kurpgeweit combined for 45 of the team's 58 points. Martinsen led the way with 17 points, Kurpgeweit had 16 and Furstenau added 12. Kurpgeweit and Callie Heithoff each had two blocks.

EPPJ outrebounded Randolph

40 to 22, had more assists (15 to 3), more blocked shots (four to one) and way more steals (31 to nine).

Everyone on the Wolfpack bench played throughout the game.

### EPPJ 58, Randolph 18

Wolfpack.....23 10 20 5 — 58  
Cardinals.....0 6 6 6 — 18  
Wolfpack — Kayton Zwingman 3-7 0-0 6, Kinley Druেকে 0-4 0-0 0, Elizabeth Moser 1-4 0-0 2, Trissa Russell 1-6 0-0 3, Braelyn Martinsen 8-11 0-0 17, Callie Heithoff 0-1 0-0 0, Molly Thiessen 1-2 0-0 2,

Kate Furstenau 6-12 0-1 12, Mady Kurpgeweit 7-16 2-3 16, Dannyka Smidt 0-2 0-0 0. Team totals: 27-59 2-4 58. Three-point shots — Wolfpack 2-14 (Russell 1, Martinsen 1). Randolph team totals: 7-37 3-6 18. Three-point shots — Randolph 1-10.

Team statistics: Rebounds — Wolfpack 40 (Kurpgeweit 11, Moser 9), Randolph 22. Assists — Wolfpack 15 (Kurpgeweit 6, Martinsen 3), Randolph 3. Steals — Wolfpack 31 (Martinsen 9), Randolph 9. Turnovers — Wolfpack 23, Randolph 42.



E-R photo/LMorgan

Trissa Russell (4) had one of the Wolfpack's seven treys Thursday night in a victory over Randolph.

**Kayton Zwingman**

**GOOD LUCK**  
Kayton & Team!  
We're proud of you!!

Love - Mom, Dad, John & Gentry

**Kinley Druেকে**

**GOOD LUCK**  
Lady Pack! We are proud of you, Kinley!

Keep working hard.

Love - Dad, Mom, Grady and Jory

**Trissa Russell**

**GOOD LUCK**  
Wolfpack and Trissa!

Your Biggest Fans!

**Molly Thiessen**

Keep up the hard work!

**GOOD LUCK WOLFPACK!**

Love - Dad, Mom, Gage & Sadie

**Madelyn Kurpgeweit**

**GOOD LUCK**  
Madelyn and team!  
We are so proud of you!

Keep working hard!  
Go Pack!

Love - Dad, Mom, Isiac, Ambert, Trinity and Asher!

**Kate Furstenau**

**GOOD LUCK**  
Kate!!

We are so proud of you!!

Love - Mom, Dad, Paige, Chase and Reid

**Elizabeth Moser**

**GOOD LUCK**

Elizabeth and Wolfpack!

Keep working hard.

Love - Mom, Dad, Lillian and James

**Kierstyn Eisenhauer**

We are proud of you #22 and team!  
Give it your all and have fun!

**GOOD LUCK!**

Love - Dad, Mom, Keyera & Braxtyn

**Braelyn Martinsen**

We are so proud of you #5!!  
Enjoy the rest of the season.

**GOOD LUCK**  
Wolfpack!!

Love - Mom, Dad, Kaylee & Brenna

**Dannyka Smidt**

I'm proud of all you have accomplished this season.

**GOOD LUCK**  
and have fun!

Your Biggest Fan

**Callie Heithoff**

**GOOD LUCK!**  
this post season to Callie and the Lady Wolfpack!

We are proud of you!

Love - Mom and Dad



# Wolfpack pick up big win Thursday, 61 to 47 over Randolph

RANDOLPH — The Wolfpack boys made nearly half of their three-point shot attempts Thursday night as they defeated

Randolph 61 to 47. Junior Karson Kallhoff drilled five of the team's seven treys as the Wolfpack went

ahead early and were never threatened by the Cardinals. EPPJ jumped out to a 43 to 17 lead at halftime. The defense limited the Cards to just four points in the second quarter. Kallhoff led the Wolfpack with 18 points. Jarek Erickson was perfect from the field (6-6) and the free throw line (2-2) to finish with 15 points.



E-R photo/LMorgan

Michael Setling (2) came off the bench to score four points against Randolph Thursday night.

## EPPJ

◀ FROM Page 14

second quarter, started by a Martinsen steal/layup and a two-pointer from Elizabeth Moser who returned to action. Furstenuau had five points and Mady Kurpgeweit added four inside the paint to give the Wolfpack a 36 to 12 margin.

The Wolfpack then dominated the second half by outscoring their foe 24 to 18.

In the fourth quarter, EPPJ scored 18 points, five coming from freshman Kinley Druke.

Four of five Wolfpack starters scored in double digits, led by Zwingman with 13 points, Kurpgeweit and Martinsen each had 12 and Furstenuau added 10. EPPJ's other starter, Heithoff, had six.

Altogether, seven of the nine players who suited up, scored in the game.

Kurpgeweit continues to dominate the boards, pulling

down 17 rebounds. Furstenuau and Kurpgeweit each dished out four assists while Martinsen led the team in steals with five.

### EPPJ 60, CWC 32

Wolfpack.....22 14 6 18 — 60  
Renegades.....3 9 9 11 — 32  
Wolfpack — Kayton Zwingman 6-13 1-2 13, Kinley Druke 2-3 1-2 5, Elizabeth Moser 1-2 0-0 2, Trisa Russell 0-4 0-0 0, Braelyn Martinsen 5-8 0-0 12, Callie Heithoff 2-5 0-0 6, Kate Furstenuau 2-7 4-4 10, Mady Kurpgeweit 4-9 4-7 12, Dannyka Smidt 0-0 0-0 0. Team totals: 22-51 10-15 60. Three-point shots — Wolfpack 6-19 (Martinsen 2, Heithoff 2, Furstenuau 2). CWC team totals: 13-57 5-14 32. Three-point shots — CWC 1-18.

Team statistics: Rebounds — Wolfpack 44 (Mady Kurpgeweit 17), CWC 30. Assists — Wolfpack 13 (Furstenuau 4, Kurpgeweit 4), CWC 5. Steals — Wolfpack 19 (Martinsen 5), CWC 6. Turnovers — Wolfpack 14, CWC 27.

### EPPJ 61, Randolph 47

Wolfpack.....25 18 16 2 — 61  
Cardinals.....13 4 12 18 — 47  
Wolfpack — Ticen Sparr 0-0 0-0 0, Kellan Hoefer 4-6 0-1 9, Michael Selting 2-5 0-0 4, Joseph McNally 0-0 0-0 0, Karson Kallhoff 5-9 3-4 18, Evin Pelster 0-1 0-0 0, Brayden Burenheide 0-1 0-0 0, Jarek Erickson 6-6 2-2 15, Taylor Beckman 0-2 0-0 0, Max Henn 4-6 1-2 9, Dylan Kolm 2-3 0-0 4, Trey Rittscher 1-5 0-0 2. Team totals: 24-44 6-9 61. Three-point shots — Wolfpack 7-16 (Kallhoff 5, Hoefer 1, Erickson 1). Randolph team totals: 16-48 9-12 47. Three-point shots — Randolph 6-19.

Team statistics: Rebounds — Wolfpack 26 (Henn 7), Cardinals 21. Assists — Wolfpack 13 (Erickson 5). Turnovers — Wolfpack 15, Cardinals 11.

**WRESTLING**


**BOYS VARSITY**  
Feb. 20-22...State@Omaha.....TBA

**GIRLS VARSITY**  
Feb. 18-19...State@Omaha.....TBA

**BOYS & GIRLS BASKETBALL**

**VARSITY/JV**  
Feb. 19...Girls Subdistricts (@ EV).....TBA  
Feb. 20 Girls Subdistricts .....TBA  
Feb. 21 vs. St. Mary's (B, PJ).....6:15  
Feb. 24-25...Boys Subdistricts.....TBA

**JUNIOR HIGH**  
Feb. 21 vs. St. Mary's (B, PJ).....4:00



**SCHOOL ACTIVITIES**

Feb. 12 Bloodmobile, hosted by PJCC •  
EPS School Board meeting  
Feb. 15 Burwell Speech  
Feb. 17-22 National FFA (Elgin chapter celebrating 24-29)  
Feb. 19 Late Starts, 9:50 & 10 am  
Feb. 20-21 NO SCHOOL  
Feb. 21 State Dance  
Feb. 25 FFA District CDE @ Norfolk  
Feb. 26 ESU8 HS Quiz Bowl  
Feb. 28 LHNE Speech Meet  
March 3 NVC Speech Meet @ Wheeler C.  
March 4 Miles of Smile • FFA District Meat Judging, Natural Resources, Vet Science & Agronomy @ Sargent

Body & Soul

...this is how we roll.



Elgin Public-Pope John

WOLFPACK

<p><b>The Willows</b> 402-887-9059</p> <p><b>TC Vet Clinic</b> 402-843-5756</p> <p><b>Jeff Temme - Ag Land Realty LLC</b> 402-843-8440</p> <p><b>Switzer Welding/Iron Creations Country Crafts</b> Tom, Brenda &amp; Brian 402-750-7749, 402-750-7748 &amp; 402-841-8184</p> <p><b>Starman Seed Service, Inc.</b> 402-843-8393</p> <p><b>Snider Memorial Funeral Home</b> - Jay Snider www.snidermemorialfh.com 402-843-2468</p> <p><b>Schindler Ag Services</b> Jake Schindler 402-843-8812</p> <p><b>Sapp Bros. Petroleum Inc.</b> 402-843-5621</p> <p><b>Sands Truck Service &amp; Repair</b> 402-843-1010</p> <p><b>Ruterbories Construction</b> Paul Ruterbories 402-649-5827</p> <p><b>River Mill Coffee Company</b> 402-929-2425</p> <p><b>Precision Repair</b> 402-843-2181</p>	<p><b>Petersburg Building &amp; Supply</b> Monty &amp; Teri Reicks 402-386-5207</p> <p><b>118 Insurance</b> Megan, Marla &amp; Jeslynn 402-843-5741</p> <p><b>Levander Funeral Home of Elgin</b> 402-843-5400</p> <p><b>Koinzan Enterprises Inc.</b> 402-843-5800</p> <p><b>Kittelson's Home Repair</b> Jim Kittelson 402-843-5833</p> <p><b>Jonny Dodge CJ</b> 402-887-4182 or 800-510-1303</p> <p><b>Jerry's Feed Service</b> 402-843-5622</p> <p><b>Invenergy Wind Energy, LLC Insurance Mart</b> Janet-Tracey-Tonya 402-843-2410</p> <p><b>Hometown Station</b> 402-843-5812</p> <p><b>Keith Hemmer, CPA, P.C.</b> Certified Public Accountant 402-843-2380</p> <p><b>Heithoff Irrigation</b> 402-843-2307</p> <p><b>Great Plains State Bank</b> 402-386-5297</p> <p><b>Elgin Veterans' Medical Clinic</b> an outpatient clinic of Boone Co. Medical Center 402-843-5910</p> <p><b>The Elgin Review</b> 402-843-5500</p>	<p><b>Elgin Pharmacy and Gift</b> 402-843-5555</p> <p><b>Elgin One Stop &amp; Sleepin Inn</b> 402-843-2100</p> <p><b>Elgin Livestock Sales, Inc.</b> 402-843-2275</p> <p><b>Elgin Body &amp; Glass</b> 402-843-2418</p> <p><b>Dwyer Manufacturing</b> 402-843-6167</p> <p><b>Klein Law Office PC, Attny at Law</b> 402-887-4910</p> <p><b>Dean's Market</b> 402-843-5300</p> <p><b>Central Valley Ag</b> 402-843-2416</p> <p><b>Beckman Lumber Inc.</b> 402-843-2131</p> <p><b>Baum Seed Service, LLC</b> 402-843-5802 or 402-843-8282</p> <p><b>Bar U Farms</b> 402-843-8921</p> <p><b>Bank of Elgin</b> 402-843-2228</p> <p><b>Antelope Memorial Hospital</b> 402-887-4151 Elgin Clinic 402-843-5444</p>
---	--	--



# Veik qualifies for state wrestling tournament in Omaha

GREELEY — Week after week during the Wolfpack's wrestling season, junior Landyn Veik has been their most consistent wrestler. Week after week, he's finished among the best, taking his place on the medal stand. Veik did it again during the D3 District Wrestling Tournament, qualifying Saturday for the upcoming Class D State Wrestling Tournament in Omaha. Competing in the 165-pound division, up from 157 where he has dominated for most of the season, Veik punched his ticket to state by finishing third. He will be the lone EPPJ boys wrestler competing at state this season. Winning two matches Friday, Veik dropped his semi-final match early Saturday. The loss put Veik in the 'heartbreak' round where the winner qualifies for state, the loser stays home. There, he faced Joseph Ducker of Arcadia/Loup City and, with an escape in the third period, won the tense match one to zero. Then, in the consolation finals, Veik pinned LHNE's Valen Searight to earn a third place medal. The Wolfpack had one other wrestler in the heartbreak round - 132 pound wrestler Grady Drueke. In his only match Saturday afternoon, it was win or stay home for the Wolfpack junior. The match proved to be the end of Drueke's season as Weep-

ing Water's Kolby Nash pinned the Wolfpack wrestler in the second period. Three other Wolfpack wrestlers (Gavin Kallhoff, Justice Blecher and Landon Kallhoff) saw their seasons end Friday after each lost two matches. Individual results from the tournament were: 132 pounds — Champ. Round 1 - Grady Drueke (Elgin Public/Pope John) 23-18 won by fall over Brayden Keyes (Wisner-Pilger) 3-30 (Fall 1:38); Champ. Round 2 - Drueke won by fall over Mason True (Osmond-Wausa) 17-21 (Fall 3:38); Quarterfinal - Trevor Steffen (Guardian Angels Central Catholic) 12-3 won by fall over Drueke (Fall 3:32); Cons. Round 4 - Drueke won by fall over Ryder Anderson-Ray (Guardian Angels Central Catholic) 27-13 (Fall 2:54); Cons. Round 5 - Drueke won by forfeit over Tyce Coufal (Ravenna) 11-11 (For.); Cons. Semi - Kolby Nash (Weeping Water) 38-7 won by fall over Drueke (Fall 1:45)

144 — Champ. Round 1 - Caelen Wipf (Weeping Water) 40-10 won by fall over Gavin Kallhoff (Elgin Public/Pope John) 1-12 (Fall 1:10); Cons. Round 2 - Ethan Coufal (Howells-Dodge) 24-24 won by fall over Kallhoff (Fall 2:19) 150 — Champ. Round 1 - Luke Shoemaker (Central Valley) 32-14 won by fall over Landon Kallhoff (Elgin Public/Pope John) 2-20 (Fall 0:25); Cons. Round 2 - Kallhoff won by fall over Trace Kaupp (North Central) 3-28 (Fall 1:32); Cons. Round 3 - Tagen Kramer (West Holt) 5-20 won by fall over Kallhoff (Fall 1:34) 165 — Champ. Round 2 - Landyn Veik (Elgin Public/Pope John) 27-10 won by fall over William Pace (Winside) 9-19 (Fall 5:55); Quarterfinal - Veik won by fall over Hunter Gall (Clarkson/Leigh) 21-24 (Fall 5:58); Semifinal - Keegan Poppe (Wisner-Pilger) 41-7 won by decision over Veik (Dec 4-1); Cons. Semi - Veik won by decision over Joseph Ducker

(Arcadia/Loup City) 35-12 (Dec 1-0); 3rd Place Match - Veik won by fall over Valen Searight (Lutheran High Northeast) 37-15

(Fall 4:46) 215 — Champ. Round 1 - Cayden Burns (Central Valley) 18-24 won by fall over Justice

Blecher (Elgin Public/Pope John) 18-20 (Fall 3:19); Cons. Round 2 - Aiden Gallop (Lutheran High Northeast) 26-21 won



E-R photos/D&L Morgan

Wolfpack wrestlers (clockwise from lower left) competing at the Class D District 3 wrestling tournament at Greeley Friday and Saturday were Grady Drueke, Landon Kallhoff, Landyn Veik, Justice Blecher and Gavin Kallhoff.



**165# LANDYN VEIK**  
*Good Luck* at  
**STATE WRESTLING!**  
 Love - Dad, Mom, Sawyer, Myles and Addy

## Second half surge downs Renegades 53 to 35

BARTLETT — Elgin Public-Pope John defeated a scrappy CWC Renegade squad 53 to 35 Tuesday night, but don't let the final score deceive anyone - it was a tough game. For the first two quarters, the Renegades gave the Wolfpack all they could handle. EPPJ fell behind early in the game, trailing for much of the first quarter before Karson Kallhoff gave the Wolfpack the lead with a trey. Junior Jarek Erickson then followed up with a bucket-and-one to lead 13 to 10. Kallhoff drilled a long-range bomb to start the second quarter, then buckets from Dylan Kolm and Kellan Hofer gave the Wolfpack a 20 to 13 lead with just under four minutes to go before halftime. The Renegades then made things interesting as they limited EPPJ to just two points the rest of the half. CWC got buckets from Michael Jesse and Elijah Heinz to cut the score to 22 to 18 at halftime. Erickson outscored CWC 10 to three to start the third quarter. Kolm followed with a two-pointer to give EPPJ a 34 to 21 lead. Renegade Trey Blackmore tried to get his team back in the game with five unanswered points, then Jesse added two free throws. The Wolfpack answered with treys from Hofer and Erickson and a two-pointer from Max Henn to lead 42 to 28 heading into the fourth quarter. EPPJ outscored CWC 11 to seven to close out the final quarter. Noteworthy was a

stretch where Kallhoff, Hofer and Kolm had back-to-back-to-back treys. Erickson led EPPJ with 16 points (13 in the second half) while Kallhoff added 14 and Kolm tossed in 11. Erickson had 13 rebounds and Kallhoff grabbed 10 as both players recorded double-doubles in the game. **EPPJ 53, CWC 35**  
 Wolfpack.....13 9 20 11 — 53  
 Renegades.....10 8 10 7 — 35  
 Wolfpack — Ticen Sparr 0-0 0-0 0, Kellan Hofer 3-9 0-0 8, Michael Seltig 0-0 0-0 0, Joseph McNally 0-0 0-0 0, Karson Kallhoff 5-13 1-1 14, Evin Pelster 0-0 0-0 0, Brayden Burenheide 0-0 0-0 0, Jarek Erickson 6-11 3-4 16, Taylor Beckman 0-1 0-0 0, Max Henn 2-6 0-2 4, Dylan Kolm 5-6 0-0 11, Trey Rittscher 0-1 0-0 0. Team totals: 21-47 4-7 53. Three point shots — Wolfpack 7-17 (Kallhoff 3, Hofer 2, Erickson 1, Kolm 1). CWC team totals: 13-52 3-4 35. Three-point shots — CWC 6-22. Team statistics: Rebounds — Wolfpack 33 (Erickson 12, Kallhoff 10), CWC 29. Assists — Wolfpack 12 (Erickson 6). Steals — Wolfpack 5 (Henn 2). Turnovers — Wolfpack 9, CWC 8.



E-R photo/DMorgan

Senior Taylor Beckman (22) had a good look at the basket on this play during first half action against CWC last week.

**Ceyephysicians**  
 everything in sight for your family  
**304 N Street**  
**Neligh, Nebraska**  
**Phone 402-887-4506**  
**RUSSELL VETICK, OD**  
**JENNIFER FURSTENAU, OD**

**Pride of the WOLFPACK PACK**

**KARSON KALLHOFF**  
BOYS BASKETBALL

A junior, Karson averaged 4 treys per game in last week's matchups against CWC and Randolph. He had 32 pnts total last week.

**KAYTON ZWINGMAN**  
GIRLS BASKETBALL

A junior, Kayton is finding her groove as the season winds down. She averaged nearly 10 ppg in CWC, Randolph games.

**LANDYN VEIK**  
WRESTLING

A junior, Landyn will be wrestling in the state tournament on Friday and Saturday. He finished 3rd at districts Saturday at 165#.

This week's sponsor: **JONNY DODGE CHRYSLER JEEP OF NELIGH**

**TRUCK MONTH**

**2024 RAM 2500 TRADESMAN CREW CAB 4x4**  
 Stk# 6R03  
 6.7L Diesel, Gooseneck Hitch Ready, Step Tubes.  
**SAVE 10% OFF MSRP!**

**2024 RAM 2500 BIGHORN CREW CAB 4x4**  
 Stk# 6R05  
 6.7L Diesel, Bucket Seats, Heated Seats.  
**SALE PRICE \$63,900**

**2025 RAM 1500 BIGHORN CREW CAB 4x4**  
 Stk# 6S04  
 3.0L Hurricane, 20" Aluminum Wheels, Remote Start.  
**SAVE UP TO \$9,000**  
 With Approved Financing.

**2024 RAM 2500 TRADESMAN REGULAR CAB 4x4**  
 Stk# 6R38  
 6.4L V-8, Power Folding Mirrors, Cloth Bench Seat.  
**SALE PRICE \$50,900**

Prices Good Through March 3, 2025 ~ **NO DOC FEES!!**

**JONNY DODGE**  
 Chrysler Jeep Inc.  
 West Hwy 275 • Neligh NE  
 402-887-4182 www.jonnydodge.com  
 800-510-1303 Salesman: Andy Beyer  
 Jonny Dodge Chrysler Jeep Inc. is an equal opportunity provider and employer.